

# Kith and Kin

Official Newsletter of the Marshfield Area Genealogy Group

Volume 36 Issue 3

September-October 2019

## Inside this issue:

President's Message	2
MAGG Officers	2
DNA Basics Chapter 7: Common Misconceptions About DNA Testing	3-4
Newly Recovered Ground Zero Photos Show Why You Should Back Up Your CD-Rs Now	5 & 12
Recently Added Wisconsin Indexed Records to FamilySearch	6
IRS Allows Tax Breaks for Buyers of 23andMe Genetic Tests	6
Next Season of the UK Version of "Who Do You Think You Are" Announcement	6
Kilkenny's Rich History is Now Available on National Archive Database	7
Genealogy Sleuthing: How to Date Old Family Photos – Part II (+1 article)	7
Odds and Ends from the 1940's	8-9
1948 & 1949 MHS Graduating Classes	10-11
Upcoming Meetings	12

## How to Back Up Google Photos to Your Computer

By Dick Eastman

Posted on July 23, 2019

My cell phone is configured to automatically send a copy of every new picture and video to Google Photos where they remain in a hidden area visible only to me. However, copying the same photos to my desktop or laptop computers and then later backing those up to the cloud turned out to be a bit complicated.



### NOTE:

Instructions on how to back up photos and videos made by Android smartphones may be found at <http://bit.ly/2Gqidmz> while iPhone/iPad/iPod touch users can find similar instructions at for their devices at <http://bit.ly/2y7NS7G>.

Luckily, Google's Backup and Sync application for computers will copy Google photos to your Windows PC or Macintosh automatically.

(from <https://blog.eogn.com/2019/07/23/how-to-back-up-google-photos-to-your-computer/>)

The desktop app for files and photos replaces the previous Google Drive app for Windows and Mac and syncs to Google Photos and Google Drive. This change was brought about because of the growing concerns by users over the confusing connection between Google Drive and Google Photos, so

Google made changes to simplify the experience.

The details are described in an article by Elsie Biage in the *MakeTechEasier* web site at: <https://www.maketecheasier.com/backup-google-photos-computer/>.

Now back up your photos and save them in 2, 3, 4, or even more different locations for safe keeping.

## President's Message

Dear Friends,

As I am sitting here writing this letter, I can hear the noise of the Central Wisconsin State Fair outside. What does that mean to me? It is the time of year that school is again starting! And what does that mean to me? That the summer is over! Where has time gone?

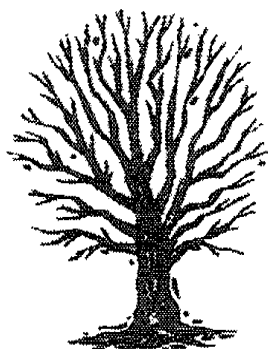
Did you get to any family reunions or gatherings this summer? Did you have a chance to update any of your family lines by talking to those relatives that were present? And have you now added that information to your computer program or the files that you keep on the family? If you didn't get a chance to talk to family members, send them an email/letter or call them. If you haven't had a chance to add the information to your files or computer program, what are you waiting for? Yes, winter is coming and many short, cold and/or snowy days that you will be staying home are ahead.

Put together your plan now on what you want to get accomplished. Whether it be doing research online, checking out a few cemeteries, court houses or libraries yet this fall, writing a letter or email to that family member that you didn't see this summer or getting caught up on adding new found information to your files or computer program, **Get Your Plan Ready!**

And don't forget about those boxes of family photos. If you know who they are, make sure that they have been identified on the back and that they are sorted into the correct individual family folder. If you don't know who they are, send copies to some of the older family members that still are around or plan a visit to see them and take the pictures with you. Don't forget to take something along for copying more pictures. Family may have pictures that you don't have. Don't want to travel, scan them, make a copy and put the copy in a safe place. Post the pictures on your Facebook page and send out a few emails asking for family to take a look. You might be surprised. What ever you decide, just do it and have fun!

As Always,

*Vickie*



## MAGG Officers and Committees

President: [Vickie Schnitzler](#) (2019)

Vice President: [Jennifer Witzel](#) (2020)

Secretary: [Lorraine Rogers](#) (2020)

Treasurer: [Noreen Moen](#) (2019)

Member at Large: [Keri Likes](#) (2020)

Member at Large: [Lori Belongia](#) (2019)

Newsletter Editor: [Vickie Schnitzler](#)

Program: [Don Schnitzler](#)

Membership: [Jennifer Witzel](#)

(Year office expires is in parentheses.)

The Marshfield Area Genealogy Group is an affiliate of the Wisconsin State Genealogical Society.

Our purpose is to provide meetings and programs of genealogical interest and to provide instruction in genealogical procedures. Also to collect, preserve, and disseminate genealogical data found in the Marshfield area and/or relative to the people of the Marshfield Area.

Meetings are held the fourth Thursday of the month except November and December.

## Membership Information

Our membership year is from May 1 to April 30. Individual membership per year is \$12.00 and a

Family membership is \$15.00 per year. For hardcopy newsletter add \$6.

Membership Forms can be downloaded from our website <http://www.marshfieldgenealogy.com/> and returned with payment to us at: MAGG, P.O. Box 337, Marshfield, WI 54449.

## DNA Basics Chapter 7: Common Misconceptions about DNA Testing

by Esther · July 12, 2018

If you've been following the [DNA Basics blog series](#), then you already know quite a bit about DNA — from what it is on the molecular level, to how it's structured, how it's expressed, and how we test it to tell you where your ancestors were from and help you find new relatives you never knew about.

This month, we want to delve into some common misconceptions about DNA testing.

### Myth #1: DNA testing requires spit or blood

Your individual DNA sequence is pretty much the same in almost every cell in your body. That's very convenient for DNA testing: it means we're not limited to using the cells in blood or spit. The MyHeritage DNA test is a simple cheek swab. When you gently rub the swab along the inside of your cheek for about 30–60 seconds, epithelial cells are collected on the swab and our lab is able to extract your DNA from those cells.

*(Continued on page 4)*



### Member Surnames

James S. **WALKER**, 9699 County Rd. SS, Amherst Junction, WI 54407. (715) 824-2337, [jimtrojan@aol.com](mailto:jimtrojan@aol.com), **BROWNRIGG, GASTON, LEVESQUE, TABB, WALKER, WASHINGTON.**

Sandra D. (**OLSON-NEUMAN**) **KOCIAN**, H3276 Co. N, Colby, WI 54421. (715) 223-2644, [SKocian@frontier.com](mailto:SKocian@frontier.com), **DEREMER, HARRINGTON, OLSON, PADDEN, ROWLEY, WHITE.**

### New Members

Carol (**FARINA**) & Ken **KRASIN**, 8743 Kentwood Court, Darien, IL 60561. (630) 910-4560 (Carol's Cell), [carol.krasin@outlook.com](mailto:carol.krasin@outlook.com) & (630) 258-5744 (Ken's Cell), [ken.krasin@outlook.com](mailto:ken.krasin@outlook.com).

Sandra D. (**OLSON-NEUMAN**) **KOCIAN**, H3276 Co. N, Colby, WI 54421. (715) 223-2644, [SKocian@frontier.com](mailto:SKocian@frontier.com).

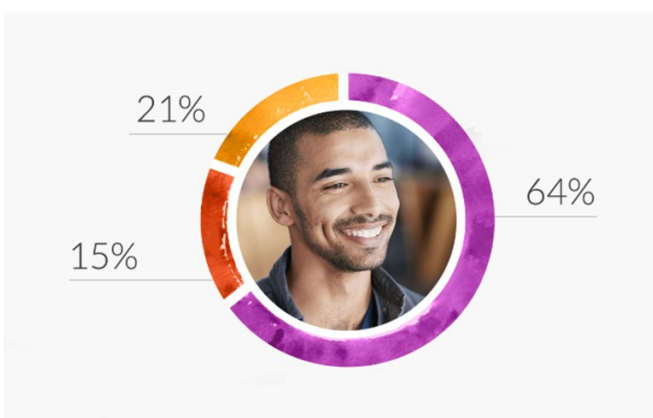


(Continued from page 3)

### **Myth #2: Because children inherit DNA from their parents, full siblings should get the same results**

While it's true that you inherit 50% of your ethnicities from each parent, you do not necessarily inherit 50% of **each** of their ethnicities. For example, if your mother is 50% Irish, and 50% Scandinavian, you will not necessarily be 25% Irish and 25% Scandinavian. The ethnic mix you inherit is random. In this example, you might be 10% Irish and 40% Scandinavian. The ethnicities you inherited from your mother should add up to about 50% of your total ethnicity estimate, but there is no way to know within that 50%, how much you have of **each** of her ethnicities without doing a DNA test.

This is why siblings get different results! Of your mother's 50% Irish and 50% Scandinavian, she may have passed down 10% Irish and 40% Scandi-



navian to one child; 20% Irish and 30% Scandinavian to another child.

### **Myth #3: Your genetic ethnicity estimate will match your known genealogy**

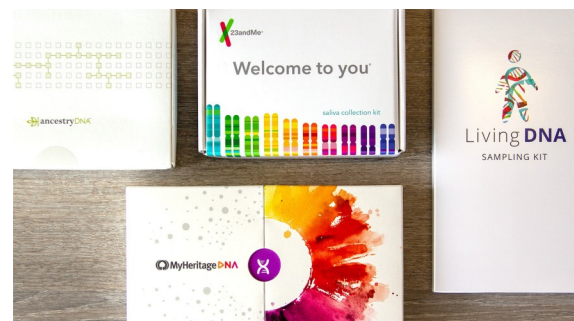
There are a number of reasons why your Ethnicity Estimate might not match the ethnicities of the ancestors in your family tree.

If an ethnicity was passed down to you through many generations, you may not have inherited a detectable amount.

You may have inherited unexpected ethnicities from ancestors you never knew about. Even the most robust trees don't include everyone. There are also biological limitations to DNA testing like the fact that some populations have similar DNA due to being in close geographic proximity, or to migration patterns that led to mixing of what were previously isolated gene pools. This is why, for example, you might see English when you expected Scandinavian.



If you haven't done a DNA test, and are curious about how your results will compare to what you expected, you can order a MyHeritage DNA kit or upload DNA data from another company to MyHeritage for free.



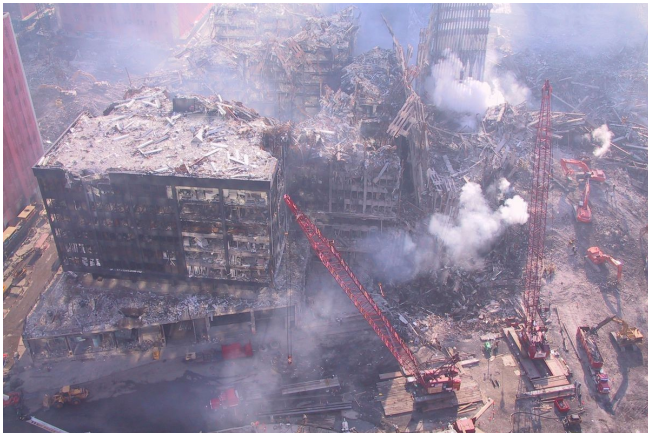
Enjoy!

(from <https://blog.myheritage.com/2018/07/dna-basics-chapter-7-common-misconceptions-about-dna-testing/>)

# Newly Recovered Ground Zero Photos Show Why You Should Back Up Your CD-Rs Now

*Photo CDs don't last forever*

By [Sean Hollister@StarFire2258](#), June 16, 2019



When comedian and activist Jon Stewart gave an impassioned speech before Congress to seek ongoing aid for 9/11 first responders, it inspired Internet Archive software curator and digital preservationist Jason Scott to share something timely with the world as well: a newly discovered cache of photos from one of the workers who toiled away at Ground Zero, and who'd saved thousands of those photos on CD-R.

**Jason Scott** @textfiles · Jun 11, 2019  
Today, Jon Stewart testified about the important of extending the 9/11 fund past 2020, to handle the health and welfare of first responders who went to Ground Zero and worked there, suffering greatly in the years hence. I'd like to add something to that discussion, something new. [twitter.com/cspan/status/1...](#)

**CSPAN** @cspan  
Jon Stewart testifies for September 11 Victim Compensation Fund: "Accountability doesn't appear to be something that occurs in this chamber...I'm sorry if I sound angry and undiplomatic, but I am angry, and you should be too."



**Jason Scott** @textfiles

In the past week, I was handed a cache of 2,400 photos taken at Ground Zero from the end of September to beginning of October, 2001. They were taken by a worker who was there with a Canon Powershot G1, and who snapped away while toiling through the wreckage.



813 3:03 PM - Jun 11, 2019

But Scott says he wasn't actually able to preserve all of those photos, because of the way they were stored. And that's not the only tragedy here:

**Jason Scott** @textfiles · Jun 11, 2019  
Replying to @textfiles  
The CDRs were absolutely falling apart. Some of the photos are already lost because the CDRs just tend to rot over time, and here, about 18 years later, that was asking a lot. Back up your old CDRs please.



So, it would probably be useful to interview the worker who took all these photos, who walked around the grounds, who captured these unique images of Ground Zero from all over the space, showing the effort being done to clear the wreckage.

*(Continued on page 12)*

## Recently Added Wisconsin Indexed Records to FamilySearch

FamilySearch International is the largest genealogy organization in the world. FamilySearch is a non-profit, volunteer-driven organization sponsored by The Church of Jesus Christ of Latter-day Saints. Millions of people use FamilySearch records, resources, and services to learn more about their family his-

and services to learn more about their family history. To help in this great pursuit, FamilySearch and its predecessors have been actively gathering, preserving, and sharing genealogical records worldwide for over 100 years. Patrons may access FamilySearch services and resources free online at FamilySearch.org or through over 5,000 family history centers in 129 countries, including the main Family History Library in Salt Lake City, Utah.

Country	Collection	Indexed Records	Digital Records	Comments
United States	<a href="#">Wisconsin Index to Naturalization Petitions, 1848-1990</a>	4,866	0	Added indexed records to an existing collection
United States	<a href="#">Wisconsin, Milwaukee Petitions for Naturalization, 1848-1991</a>	249,039	0	Added indexed records to an existing collection
United States	<a href="#">Wisconsin, County Marriages, 1836-1911</a>	17,409	0	Added indexed records to an existing collection

## IRS Allows Tax Breaks for Buyers of 23andMe Genetic Tests

Buyers of 23andMe Inc.'s genetic-testing kits will now have an easier time paying for the service with tax-advantaged health accounts after a favorable IRS ruling.

The decision offers more clarity to consumers and reduces the cost of the company's service. It also highlights differences between the tax law's permissive definition of medical care and health regulators' more restrictive approach to direct-to-consumer testing products.

You can read the full story in an article in an article by Katherine Ellen Foley in the *QZ.com* web site at: <http://bit.ly/2JM5b4F>.

(from <https://blog.eogn.com/2019/07/23/irs-allows-tax-breaks-for-buyers-of-23andme-genetic-tests/> )

\* \* \* \* \*

## Next Season of the UK Version of "Who Do You Think You Are" Announcement

*Who Do You Think You Are* has become one of the most beloved shows the BBC has created in recent years. It is a show all about genealogy, history, and getting a look in on celebrities' lives.

The new season will include appearances and studies of the ancestry of Harry Potter himself Daniel Radcliffe, Naomie Harris, Kate Winslet, Jack and Michael Whitehall, Mark Wright, Sharon Osbourne, Paul Merton, and Katherine Ryan.

You can read all the details at: <http://bit.ly/30XfE2T>.

Unfortunately, these shows will only be broadcast in the United Kingdom, not in North America or elsewhere.

(from <https://blog.eogn.com/2019/07/24/next-season-of-the-uk-version-of-who-do-you-think-you-are-announcement/>)



## Kilkenny's Rich History is now Available on National Archive Database

The Kilkenny County Library has joined the Digital Repository of Ireland – making Kilkenny's rich history available to the world at the click of a button. The partnership will see the records currently held by the Kilkenny County Library, including information on the county's history, geography, antiquities, archaeology, folklore and culture, being added to the national archive database.



Patrick Street

You can read more in an article by Colin Bartley in the *KilKinneyNow* web site at: <https://kilkennynow.ie/rich-history-of-kilkenny-joins-national-archive-database/>.

(from <https://blog.eogn.com/2019/06/18/kilkennys-rich-history-is-now-available-on-national-archive-database/>)

\* \* \* \* \*

## Genealogy Sleuthing: How to Date Old Family Photos – Part II

Last week, Dick Eastman published a brief article about Genealogy Sleuthing: *How to Date Old Family Photos* that simply pointed to an article in the Legacy Tree Genealogists' blog, entitled *Genealogy Sleuthing: How to Date Old Family Photos – Part I*. If you read the article and enjoyed it, I am sure that you will also want to know that Part II of the article has now been published at <https://www.legacytree.com/blog/womens-fashion-date-old-photos>.

If you missed Part I, you can start there at <https://www.legacytree.com/blog/date-old-family-photos>.

(from <https://blog.eogn.com/2019/08/12/genealogy-sleuthing-how-to-date-old-family-photos-part-ii/>)

## New Resource for Genealogists at the Tennessee State Library & Archives

A new tool for researchers is now available on the Tennessee State Library & Archives website.

The all-in-one **Genealogy Index Search** brings together over 1 million names appearing in Tennessee's most important historical records.

Inspired by the way Ancestry.com and other online services search multiple record groups from a single screen, staff at the Library & Archives worked with the Secretary of State's Information Technology Division over a two-year period to create this new resource for genealogists and historians.

The Genealogy Index Search includes sections on Death Records, Military Records and general Tennessee research. A listing of the individual databases and the number of entries in each is found below. The individual indexes were compiled by staff at the Library and Archives over many years. According to Ron Lee, the Assistant Director of Public Services, the work began in the late 1990s. "We had one of the first web sites in Tennessee government, and for several years the Library and Archives web site was among the top three most visited of all state government websites."

You can read a lot more in an article by Chuck Sherrill, State Librarian and Archivist, in the Tennessee State Library & Archives Blog at: <https://tslablog.blogspot.com/2019/06/new-resource-for-genealogists-at.html>.

(from <https://blog.eogn.com/2019/06/24/new-resource-for-genealogists-at-the-tennessee-state-library-archives/>)



## Odds and Ends from the 1940's

*Items Reprinted from the Marshfield News Herald, Marshfield, Wisconsin*

### 135TH MEDICAL BAND TO LEAVE CITY ON JAN. 20

#### Regiment to Establish Base Hospital at Camp Shelby, Mississippi

The 135th Medical Regiment Band of Marshfield, which will be inducted into Federal service with units in four other Wisconsin cities at 12:01 a. m. Monday, Jan. 13, has orders to entrain at the North Western railroad station here at 1:20 a. m. Monday, Jan. 20, Capt. A. J. Rasmussen announced today. The unit is expected to be in training at Camp Shelby, Miss., for a year.

All men are ordered to report in uniform at 8:30 a. m. Jan. 13 at the Armory for their first meeting, and will remain in uniform during the week spent in Marshfield. Complete details as to the activity of the unit during its seven days at home are not yet available.

At the present time the unit consists of Capt. Rasmussen, War rant Officer Charles Braem, and 24 enlisted men, four men short of its authorized strength.

#### Fill Quota at Hattiesburg

Capt. Rasmussen stated that the vacancies are being held open for certain instruments to complete the instrumentation of the band with a need existing at the present time for two trombonists. Any positions not filled at home will be filled from the regiment at the training center in Hattiesburg, Miss.

The roster of the local unit will be made public after the induction next Monday, Capt. Rasmussen said.

The 135th Regiment, commanded by Col. William J. Bleckwenn, Madison, is comprised of the local band, headquarters and a hospital and a service company at Madison, a hospital and an ambulance company at Milwaukee, two collecting companies at Racine, and an ambulance company at Waupun. The Marshfield unit will go directly to Madison, where final type examinations will be given and all records transferred to Federal control. Tuesday morning, Jan. 21, the band, together with the headquarters and the Medi-

son units, will entrain for Milwaukee, where Milwaukee and Racine units will concentrate, and the regiment will then board a special troop train and pick up the Racine contingents on the trip south to Camp Shelby.

Officers here stated that Camp Shelby, 15 miles out of Hattiesburg, is an old World War camp which was dismantled after the cessation of hostilities. Rebuilding was begun upon the passage of recent defense measures.

Two divisions, including the 37th of Ohio, are at the camp now, a-long with 7,000 workmen engaged in rebuilding the training center. The U. S. Army strength at Camp Shelby now approximates 25,000 men. it was stated.

#### Old Fashioned Southern City

Hattiesburg, according to reports received by the Marshfield unit from Chaplain Anselm O'-Keefe, of St. Norbert's College in DePere, present liaison officer at Camp Shelby for the 135th Medical Regiment, is an old fashioned southern city of 24,000 people. Mississippi is a dry State as far as the climate is concerned and Camp Shelby is situated in the "pine ridge" area, with the soil of a sandy texture rather than of "gumbo." the bane of the Army.

The 135th will establish a base hospital for the 4th Corps temporarily; when the Army is enlarged the-hospital will be expanded to form an. Army rather than a Corps hospital, and will serve about 50,000 to 75,000 men.

#### Furnish 'Esprit de Corps'

The duties of the local contingent will be primarily to furnish the "esprit de corps" for the regiment and for the patients at the hospital. However, the band members will be required to learn first aid and other medical duties in order that they may be equipped to fill gaps in the regiment whenever they occur.

An Army truck assigned to the 135th Medical Regiment yesterday picked up heavy baggage of the local contingent which will not be required until the regiment arrives at Camp Shelby and transported it to Madison where, on Jan. 15, a truck caravan will begin the 5 -day trek to the southern camp.



### Three War Veterans

At least forty trucks and ambulances make up the mobile unit of tire 135th Medical Regiment, it is reported. An indication of the scope and preparedness of the regiment can be gained from the fact that two 2 1/2-ton trucks carry nothing but medicines, and additional supplies are requisitioned daily.

Three members of the 135th Regiment Band, Capt. Rasmussen, Warrant Officer Braem, and Technical Sergeant Maynard L. Peterson, served together with the 127th Infantry Band in the World War, and saw six months service as stretcher bearers and first aid men under fire in the front line.

*(from the Marshfield News Herald, Jan. 09, 1941, page 1, columns 2&3 & Page 2, column 2.)*

\* \* \* \* \*

### BRAEM TO QUIT SCHOOL OFFICE

#### Vocational Board President to Leave for Camp Shelby Soon

Charles Braem, president and senior member of the Board of Vocational Education, will tender his resignation to the Board of Education tomorrow, he announced at a meeting of the Vocational Board held last night at the Willard D. Purdy school.



Mr. Braem's resignation is due to the fact that, as a warrant officer in the 135th Medical Regiment Band, he will be inducted into the U. S. Army Jan. 13.

#### Given Vote of Thanks

President of the Board during the past two years, Mr. Braem was appointed to that body on Sept. 26, 1934, as an employe member.

Following the president's announcement, members informally approved the following resolution, which will be read into the minutes at the next meeting of the Board :

"Be it resolved, that the Board accept with regret, the resignation of Warrant Officer Braem and that a vote of thanks be formally given Warrant Officer Braem in appreciation of his faithful service as a member of the Board and that the Board extend to him its most sincere good wishes for a most successful career in the service of his country."

#### Advisory Committee Named

As a result of instructions received by Director L. H. Dressendorfer at Wausau Tuesday, where he attended a meeting of the Menomonie WPA District on matters pertaining to the National Defense Act, the Board last night appointed a local Advisory Committee for Vocational Education for Defense Workers, and a supplementary group of consultants.

The personnel of the advisory board, according to the Defense Act rulings, must consist of two employers, two employes, and the Director of Vocational and Adult Education, who acts as chairman of the committee. Employer members chosen were W. D. Irvine, of Lang & Scharmann Inc., and Ray Finucane, of Felker Bros. Manufacturing Company. Clarence Olson, employed by the Roddis Lumber and Veneer Company, and Ray Hines, employed by the Wisconsin Butter Tub Company, were the employe members selected.

#### Represent Labor, Industry

Employer members are selected from those engaged in defense industries, while employe members must come from A. F. of L. and C. I. O. ranks, according to the ruling. Mr. Olson was selected as a representative of the A. F. of L. and Mr. Hines was selected to represent labor at large on the board, in heu of the fact that no C.J. O. union exists in Marshfield.

The board has power to vote on recommendations brought to the Vocational Board's attention.

Arthur J. Avis, local NYA director, William Buckley, representing the WPA, and Mark E. Kiefler, of the local Wisconsin State Employment Service office, were selected as consultants.

The board adjourned to Wednesday evening, Jan. 29, at which time the election of officers for the ensuing year will take place.

*(from Marshfield News-Herald, Jan. 09, 1941, page 1, column 5.)*

*(More 1940's articles to be continued in next issue)*

## Graduating Class of 1948 from Marshfield Senior High School

Joellen Abbott	Isabell A. Froeba	Marjorie Mae Lawrie	Lorraine D. Schmitz
Terrance Adler	Victor Gass	Marie Link	Bernice Schnitzler Harry
William A. Allen	Jeanette M. Gebelein	Kathleen Carol Luedtke	Keith Schoff
Dorothy L. Altmann	Vivian L. Gerber	Luella J. Lupient	Kenneth A. Schommer
Rosemary C. Bartl	Beverly J. Gnotke	Betty Jean Marvin	Lorraine Schueller
Valeria M. Bartl	Jerry Gonerig	Nancy Jo Ann Mattison	Albert Schwandt
Patricia Louise Bauer	Mary Ann Gotz	Shirley J. Maxwell	Marilyn Ann Senn
Mae E. Baumgartner	Shirley A. Graettinger	Emil P. Mech Jr.	Roger R. Serchen
Douglas H. Beining	Carol F. Grassman	Paul Mechler	Naomi Smith
Harriet M. Bever	Henry E. Grottke	Laurett McDonald	Blanche L. Spalding
Robert C. Biechler	Rosita K. Hager	Wilmer Lynn Mengeling	Dora Leu Specht
Shirley M. Bishop	Bertha E. Hahn	Vivian A. Michalski	Clara Marie Stadler
Joan Bloczynski	Paul R. Hahn	Marbeth Ann Miller	John B. Stadler
Viola E. Bluhm	Joanne V. Hamus	Rita J. Mittermiller	Eugene A. Stangl
Audrey Dorothy Blum	Charles M. Hansen	Douglas D. Mueller	Geraldine Stauss
Carole A. Borofka	Marc F. Hansen III	Betty Jane Neder	Richard G. St. Dennis
Elizabeth Ann Bourcier	Mae Hartnett	Alleda H. Nelson	Leurette T. Steger
Erna Henrietta Boushon	Ina A. Hartnett	Nancy Ann Nelson	Germaine I. Stoiber
Lois F. Brandl	Victoria K. Hasenohrl	Rita Amelia Neuman	Joan M. Stolzman
Thomas R. Brandt	Betty Hastings	Bernard E. Niehaus	Ruth J. Stoltzman
Katherine L. Budd	James Joseph Hastreiter	Virginia Niehaus	Jeannine Lois Storm
Carol Mae Buffington	Virgean C. Hebert	Thomas F. Nikolai	Marvin Strohman
Robert L. Burt	Gene Allen Heggelund	Donna M. Oppmann	Twyla Marie Thorson
Laverne Cummings	Norman Hein	Lois Ann Ott	Marlys E. Thuss
Robert C. Davis	Kenneth Heiting	Iona Mae Otto	Montie W. Tracy
Dan Decker	Virginia Ann Herkert	James Harold Parmelee	Dolores S. Tyrolt
Richard A. De Jarlais	A. Duane Hestekind	Darrell Wayne Peterson	Ann Utter
Marjorie E. Dickof	Richard L. Hewitt	James O. Peterson	Gerald Wagner
Joyce A. Doherty	Betty M. Hinkfoth	Robert P. Ploen	Joseph A. Wanke
Yvonne Audrey Ducommun	Wallace H. Hinz	Ray M. Poeppel	Beverly Jane Ward
Jeanette A. Eberhardy	Mary Katheryne Hortsch	Gerald H. Praschak	Charles B. Warnecke
Lynette Eckes	Richard Lee Jacobus	Marie E. Preising	Cecelia. Weidman
Marion L. Ewert	Grant Duane Johnson, Jr.	Jeanne Raabe	Dolores Weigel
Harry L. Federwitz	Janet Kathryn Johnson	Charles E. Radtke	William Weigel
Joan M. Fehrenbach	Jeanne Jurgensen	Vernon D. Rasmussen	Marjorie Ann Weighner
Harry A. Feirer	Marianne Kaas	Arthur J. Reeths	Rose Mary Weinfurtner
Richard F. Feltz	Wallace Edward Kane	Charles H. Rehlinger	Delores M. Welniak
Thora Mae Fink	Eileen Kesler	Joan M. Rickman	Darrell Wenzel
Annette M. Fisher	James E. Kettelle	Deon B. Rohde	Gerald Wenzel
Betty Mae Fisher	Milton Glen Kier	Macella M. Roider	La Vone Wernberg
Donna L. Flagel	Mae E. Knorr	Jean Patricia Rue	Lorraine Whipple
Myron Fleming	Arlene E. Koenig	Rosalynn M. Sackett	John Williams
Jerome M. Folz	Gene Kotas	Rueben W. Schaefer	Ray Williams
Kathleen M. Fond	Patricia A. Kraemer	James H. Schlaghaft	Roy Winzenried
Harold W. Fosholdt	Richard A. Kraemer	Betty K. Schmidt	Arleen H. Wistrom
Jane M. Foster	Catherine Ann Kraus	Ellen Schmitt	Phillis Wolff
Carroll W. Frenzel	Richard Kraus	Lamar A. Schmitz	Bette Lou Wundrow
			Dolores M. Zinthefer

*(from Marshfield News Herald, June 01, 1948, page 3, columns 4, 5, 6 & 7)*

## Graduating Class of 1949 from Marshfield Senior High School

Donald P. Baierl	Patricia Mary Gravitter	William H. Leonard	Ray B. Seefeldt
Marian L. Baierl	Esther C. Grottke	Florence A. Link	Donald D. Seidl
Suzanne J. Barnes	Rose Marie Guckenberger	James D. Lube	James A. Seidl
Florence M. Becker	Betty J. Guldan	LeRoy B. Martin	Richard K. Sell
Roma Ann Beining	Vern Kenneth Hansen	Edward W. Maurer	Lucille M. Sersch
Elly L. Beyer	James E. Hardinger	William J. Mechler Jr.	John Seymour
Louise Ann Bilgrien	John R. Harder	Donald J. Merkel	Raymond A. Sommers
Barbara J. Bitzer	Anthony P. Hastreiter	Joan Catherine Merkel	Charles H. Specht
Joan M. Blenker	Beryl J. Hayden	Ruth A. Merkel	Lois J. Spencer
Lawrence W. Bluhm	Joan Vivian Heckel	Shirley Mae Milleville	David J. Stadler
Gerald E. Boehning	Robert L. Heil	Margery Lou Montag	Joseph R. Stadler
Lyle A. Bredemann	Darlene M. Heinrich	Patricia Dawn Nelson	Margaret E. Stauber
Karl M. Breheim	Anita A. Heintz	Russell B. Nelson	Cydelle Ann Stecker
Iris Ann Budtke	Gerald Heiting	Arlene A. Niehaus	Thomas Frank Stockheimer
Margaret L. Cattanach	Joan M. Heiting	Jeanine E. Oertel	Phyllis E. Strohman
Jerome C. Coaty	Anita R. Heller	Shubel Hudson Owen	Donald K. Sullivan
John A. Copp	Gloria Mae Hestekind	Helen Marie Paasch	Walter C. Tiry
Charles Covi Jr.	Jeanette L. Holubets	James E. Paasch	Wayne L. Tomfohrde
Duane Cummings	Grace Joan Hood	La Verne S. Paulin	Dale E. Tremmel
Richard G. Decker	Robert W. Huebner	Jeanette M. Perko	James A. Treutel
Patricia Derge	Patricia Anne Hughes	Dolores M. Peterson	Lois Ann Treutel
Janine Marie Dickerson	John James Irvine	Mary Pauline Pflum	Ellen Mae Trierweiler
Lavern J. Dishinger	Harold Charles Jaeckel	Alberta Betty Pilsner	Lois Jane Tuttle
Harvey Duerr	Robert K. Jamison	Charlotte Pinion	Norman E. Wagner
Colleen Dumas	Charles S. Jenks	Mary Lou Plath	Barbara Weber
Elizabeth Anne Dutton	Elaine B. Kangas	Dolores Polasek	Herbert C. Weber Jr.
Audrey Jane Earl	Jo Ann Kerske	Margeory Ann Prust	Bernice I. Wegner
Lucille E. Eberhardy	John A. Kleinheinz	Neil L. Rasmussen	Jeanette C. Weigel
Mary Jane Eckes	Arvin L. Kleinschmidt	Roger B. Rasmussen	Barbara E. Weinert
Mary R. Fass	Betty Joanne Klemme	Joseph F. Reigel	Beverly M. Weis
Darlene R. Feirer	DuWayne R. Knauf	Eugene F. Rendmeister	Clara Lou Welch
Marguerite L. Felker	Jeanne L. Kobs	Howard L. Rice Jr.	James Wengel
Mary Rose Fellenz	James J. Koch	James W. Roehrborn	Rodney D. Wenzel
Bonnie Lou Foltz	Bernice M. Kohlbeck	Irwin L. Rusch	John G. Wendt
Bernice L. Froeba	Jeraine A. Kolbeck	A. Marion Ruter	Glen L. Wickersham
Audrey Fyksen	Cecelia M. Konitzer	Gerald E. Schalow	Donald F. Wieland
Carol A. Genett	Angeline Konopa	Alfred L. Schlecht	Darlene M. Wilkens
Viorene I. Gepner	Grace E. Kraemer	Arlene Margaret Schmidt	Carol J. Wink
Carol J. Gersbach	Keith A. Krenz	Jean D. Schrage	William Wohlfahrt Jr.
Audrey Gaes	Lois Ann Krueger	Geraldine C. Schreiner	Ermaline E. Zahn
Robert W. Goldbach-	Henry J. Kurz	Lavern Schuld	Shirley Zellner
Jeanne J. Graff	William J. Lauer	Erma D. Schumacher	Norbert H. Zettler
Mary Jane Grail	Donald W. Leibelt	Anthony H. Schuster	William R. Zinthefer

*(from Marshfield News Herald, June 07, 1949, page 6, columns 4, 5 & 6)*



(Continued from page 5)

Except we can't.

He's dead.

Scott is drawing attention to two plights at the same time — that of those brave men and women who worked to clean up after the towers fell, and that of the memories that they and many, many others believe they may have preserved on recordable discs. Discs which don't actually last forever, as we've learned in recent years.

So now might be a good time to check on your photos, and back them up to something newer, better, and redundant — something that puts them in multiple places in case of failure.



If these photos move you, the family that recovered and archived the photos asks if you might consider donating some money to a charity that supports first responders.

You can browse the whole photo album here. <https://www.flickr.com/photos/textfiles/albums/72157708997281912>

**Correction, June 17:** The family that discovered the photos isn't related to the photographer; I regret the error.

(from <https://www.theverge.com/2019/6/16/18678447/9-11-ground-zero-world-trade-center-pictures-recovered>)


## MARSHFIELD AREA GENEALOGY GROUP

Phone: 715-897-1910  
Or 715-387-4044

Email:  
[schnitzler.vickie@charter.net](mailto:schnitzler.vickie@charter.net)

We're on the Web

<http://www.marshfieldgenealogy.com>

and look for us on 

ISSN# 1089-845X

## Upcoming Meetings

**August 29, 2019** “Family Traditions, the Oldest Form of Family History.” MAGG members will exchange their stories that have been passed down from generation to generation by word of mouth and how it influenced their personal family history research. (**Everett Roehl Marshfield Public Library upstairs in the Felker Family Genealogy and Local History Room, 6:30 p.m. Please Note Date!**)

**September 26, 2019** “Application for Membership To The Society of Mayflower Descendants.” (tentative – depending on travel) Bob Sanders will talk about the process of making his application to the Society of Mayflower Descendants. (**Everett Roehl Marshfield Public Library upstairs in the Felker Family Genealogy and Local History Room, 7:00 p.m.**)

**October 24, 2019** “Immigration/Naturalization Records.” Program will be presented by Sharon Karow, President, North Pines Genealogical Society. (**Everett Roehl Marshfield Public Library upstairs in the Felker Family Genealogy and Local History Room, 7:00 p.m.**)

**November & December, 2019** No meetings. Enjoy your holiday time with family and friends! We will see you in January 2020.

Meetings of the Marshfield Area Genealogy Group are regularly held at 7:00 p.m. on the fourth Thursday of each month at the Everett Roehl Marshfield Public Library upstairs in the Felker Family Genealogy and Local History Room, except July (month of our family picnic) and November & December (no meetings) unless otherwise specified.