

In Commemoration
of the
Solemn Blessing and Dedication
of the
Church of
Our Lady of Peace



Marshfield, Wisconsin

June 12, 1966

Dedication Program

CHURCH OF OUR LADY OF PEACE

Marshfield, Wisconsin

4:00 *Blessing and Dedication*

4:30 *Solemn Pontifical High Mass*

Celebrant — Most Reverend Frederick W. Freking, D.D.

Arch Priest — Very Rev. Walter J. Dillenburg

Deacon — Rev. James E. Dillenburg

Sub Deacon — Rev. Thomas J. Dillenburg

Deacon of Honor — Rt. Rev. Msgr. A. N. Schuh

Sub Deacon — Rev. L. H. Timmerman

Preacher — Father Daniel J. Kelly

Master of Ceremonies — Rev. James Biechler

*Assistant Masters of Ceremonies — Rev. Wm. J. Matzek
— Rev. Thomas J. Etten*

Minor Ministers

Cross Bearer — Rev. Dennis Stanchik

Crosier — Rev. James R. Lane

Mitre — Rev. Richard McKoskey

Candle — Rev. Robert Hegenbarth

Book — Rev. Edward Penchi

Acolytes — Rev. John I. Nilles

Rev. John Agnew

Honor Guard — Fourth Degree Knights

Organist — Mrs. Frank Wesley

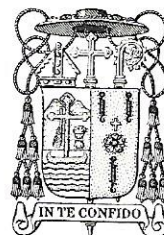
*Director and Chanters — Frank Wesley, Richard Schneider,
Frank Binder, Edmond Smith*

Color Guard — American Legion

7:00 *Dinner — Clergy and Sisters in School Dining Hall*



Pope Paul VI



The Bishop's House
520 Mormon Coulee Road
La Crosse, Wisconsin

May 1, 1966

To the Clergy, Religious and Laity of Our Lady of Peace Parish
in Marshfield:

My dear friends in Christ,

With the blessings of God, the Catholic Church continues to grow and to give increase to the People of God in our Diocese. Yet, few generations in this period of our history are privileged to have the honor and the great responsibility of establishing an entirely new parish and to see their parish plant reach its completion.

In the span of twenty years, your parish has seen the building of a temporary church, a grade school and convent, an inter-parochial high school, a rectory and now your beautiful permanent church. Obviously, God has rewarded your generosity and sacrifice by providing the material blessings and the spirit of faith which have made this possible.

Undoubtedly you share in the heritage of faith coming down from the time that the Holy Sacrifice of the Mass was first offered in Marshfield in 1874, when the first Church of St. John the Baptist was begun in 1880, when Sacred Heart Parish was established in 1915, when your St. Joseph's Hospital was established in 1890, and when your Columbus High School was built in 1952 to supersede the former St. John's High School begun in 1927.

It is with heartfelt gratitude to God then, with thanks to the earlier pioneers for the faith in the Marshfield community, and with sincere appreciation to the present generations of Our Lady of Peace Parish, that I offer hearty congratulations upon the completion and dedication of your new and lovely Church of Our Lady. I pray that God will continue to bestow His blessings upon you so that the People of God, who will worship there, will grow in faith and increase in His love.

United with you in the great joy of this occasion and expressing anew our thanks to God, I remain

Sincerely yours in Christ,

F. Frederick W. Driehing
Bishop of La Crosse

The Pastor's Message

JUNE 12, 1949



This is indeed a day of joy and happiness for us, the members of Our Lady of Peace Parish - a time of celebration and rejoicing because another milestone has been reached in the formation of Our Parish. Today after nearly two years of organizing and planning we have reached the day on which we are blessing and dedicating Our New Church and School. Today we can view the fruits of our sacrifices with some satisfaction.

Without fear of contradiction, we can point with pride to a beautiful and utilitarian edifice and tell our friends, our neighbors and the whole world that this is the work of our hands, the produce of our sacrifices, the outcome of our love of God and his Church. Like our forefathers before us, we have dared to undertake a task that would have perhaps discouraged those of lesser faith. Like the unselfish spirit of the early

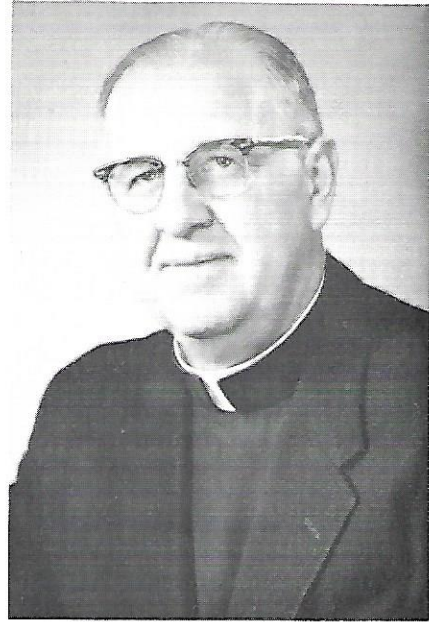
pioneer, we have started a new parish and built a Church and School not necessarily for our own comforts and conveniences but for the furtherance of Christ's Kingdom on earth and for future generations. Had not the love of God and the noble spirit of sacrifice prompted Catholics during the past nineteen hundred years to do great things for God, the Church today would still be in the catacombs.

God in His infinite wisdom has chosen us to carry on where others have left off - for this we are thankful. We are laboring under the glorious patronage of Our Blessed Lady - for this we feel honored. Our Friends and Benefactors have been most kind and generous - for this we are sincerely grateful. Our labors and sacrifices are not only recorded in time but also in eternity - for these we hope to receive an eternal reward.

FATHER WALTER J. DILLENBURG

The Pastor's Message

June 12, 1966



"The Kingdom of Heaven is like a grain of mustard seed, which a man took and sowed in his field. This, indeed, is the smallest of all the seeds, but when it grows up it is larger than any herb and becomes a tree." Thus spoke Our Lord in one of His many parables about His Church and the people of God.

Today, we too, could perhaps speak of the tiny mustard seed sown 19 years ago which has now become a full grown tree. Yet, in a wider sense, we of Our Lady of Peace Parish have only reaped where others have sown. We have only to remind ourselves of the great priests, Sisters and laymen who have gone before us during the century of Catholicity in the growing city of Marshfield and its surrounding areas. They have sown and we are reaping.

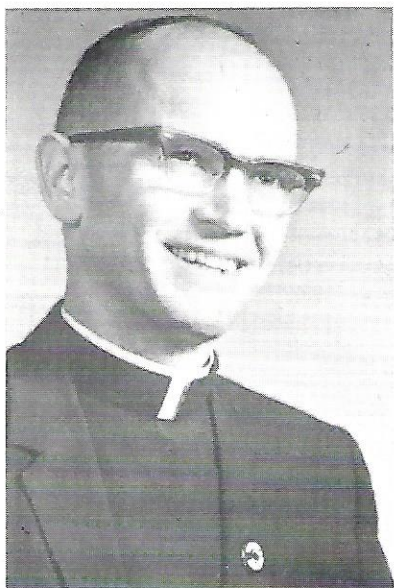
Nevertheless, in the order of Divine Providence, God has chosen me to be your Pastor, to bring this corner of His vineyard into existence and to make it flourish. To this end we have lived and worked among you; giving the very best that is in us — always going forward, never backward.

Nineteen years in the life of the Church and of the Parish is only a short time, but the people of Our Lady of Peace Parish have much to show for their labors and their efforts. Physically and materially we have the school, convent, rectory, our share and enterprise in Columbus High School and now, our new Church, shadowing all these buildings. Spiritually, too, we have advanced in holiness and sanctity thru the participation of the liturgy and the grace of the Sacraments and prayer.

Today, as we dedicate our new Church, our hearts are filled with gratitude and thanks to Almighty God for all His graces and blessings; to all the wonderful members of our Parish for their diligence and loyalty; to the great Sisters and Priests who have labored with us so faithfully; to the committees, trustees, benefactors, friends and various societies who have given so generously of their time and efforts and, last, but not least, to the Blessed Virgin Mary, under whose title we live.

God bless all, and eternal rest be granted to all who have labored here and gone to their eternal reward before us. May Our Lady of Peace Parish always, as she has in the past, be a beacon of light and hope to the people of God.

FATHER WALTER J. DILLENBURG



Father William J. Matzek

Assistant
Pastors



Father Thomas J. Etten

Father Richard D. Rossiter

Father James R. Lane

Father Richard H. McKoskey

Father Robert S. Hegenbarth

Father Edward J. Penchi

Father John I. Nilles



Elmer J. Martin
Secretary



John H. Stauber
Treasurer

Our Faculty



Sister M. Serene, Sister M. Donelle, Sister M. Paul Ann, Sister M. Anne Arthur, Sister M. Cornelia and Sister M. Anne Raymond.

"We have in us a little bit of everyone whom we have ever met"

If this is so, how much the people of Marshfield owe to the School Sisters of Notre Dame who for four generations have labored so willingly in the vineyards of our minds.

When Our Lady of Peace School opened with a High Mass on September 7, 1949 there was an enrollment of 176 children and a faculty of 5 Sisters.

The intervening years have brought many changes; new classrooms, and, on March 25, 1963 new habits for the Sisters.

During the school year 1965-1966 the faculty consisted of 6 Sisters and 5 lay teachers, and the enrollment had increased to 446 children from the 2nd through the 8th grades; the first grade having been eliminated this year. The lay teachers are Mrs. Herman A. Meyer, Mrs. Ella Esser, Mrs. Wm. Mechler, Mrs. Dorothy Schlagenhaft, Mrs. John Fiechter.

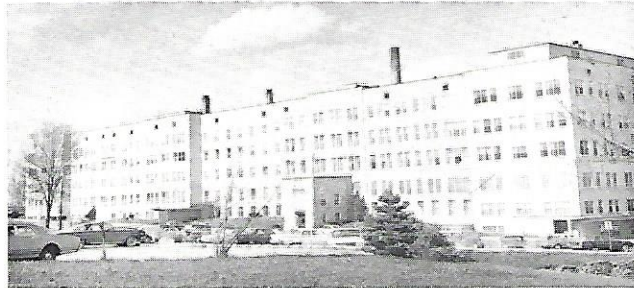
History of Catholicity in Marshfield



A Look at the Past

Almost one hundred years ago, in 1874, the first Mass was celebrated in what is now the city of Marshfield, Wisconsin at the home of Louis Rivers.

The following twenty years saw the building of Marshfield's first Catholic Church — St. John the Baptist — and the erection of its first Catholic school. This grade school was staffed, on November 18, 1882, by the School Sisters of Notre Dame, who from that day forward have constantly served our schools with diligence and devotion.



On December 9, 1890 Mother Frances Streitel of the order of the Sorrowful Mother arrived in Marshfield with five Sisters and founded St. Joseph Hospital in a rented house with accommodations for six patients. The sick did not come to the Hospital during the first years and the Sisters did private nursing in homes and helped with the housework, for which they received barely twenty-five cents a day. Today, with the most recent \$5,000,000.00 expansion program; being completed in 1964 St. Joseph Hospital has a Medical Staff of 74 physicians, plus approximately 650 other employees and serves nearly 11,300 admissions and 7,700 out-patients annually.

As the population of the city increased the need of a second Catholic Parish and school became evident and the Sacred Heart of Jesus Parish was established in 1915.

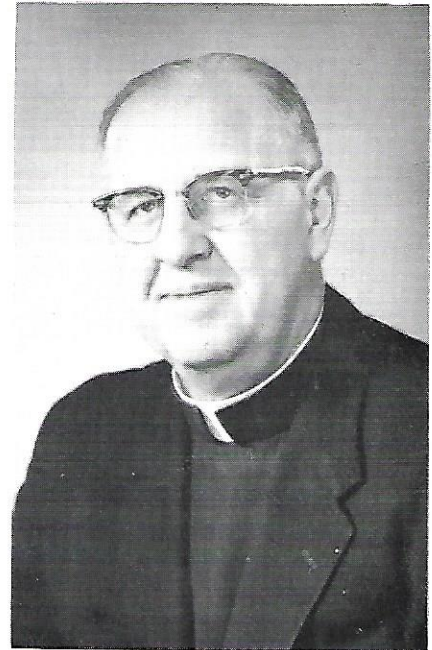
By 1927 the school program had been expanded to include the first two years of High School and the building to accommodate these students was built in St. John's Parish and completed in 1928.

This, then, was the status of the Catholic Church and school system in Marshfield until the spring of 1947 when the late Most Reverend John P. Treacy, D.D., Bishop of the LaCrosse Diocese established the boundaries of Marshfield's third Parish, to be known as "Our Lady of Peace" and appointed Reverend Walter J. Dillenburg its first Pastor.



1941

Our
Pastor's
Silver
Jubilee



1966

FATHER WALTER J. DILLENBURG

Know your founding and present Pastor of Our Lady of Peace Parish. Born at Shawano, Wis., son of George Dillenburg and Barbara Ashenbrenner. Attended Salvatorian Seminary, St. Nazianz, Wis., (Minor Sem.) St. Meinrad, Indiana (Philosophy), St. Francis Milwaukee, (Theology). Ordained June 7, 1941 (This is my 25th Jubilee year). First Mass at Sacred Heart Church, Shawano, Wis. June 15, 1941. Appointed Assistant at St. John's, Marshfield, Wis. June 21, 1941. Army Chaplain in World War II (1943 to 1946), appointed Pastor of Our Lady of Peace April 17, 1947. Chaplain of American Legion Post #54 12 years; State Chaplain of American Legion 1959. Appointed Consultor of Diocese of La Crosse on February 15, 1966.

History of Our Lady of Peace Parish

Two Decades of Progress

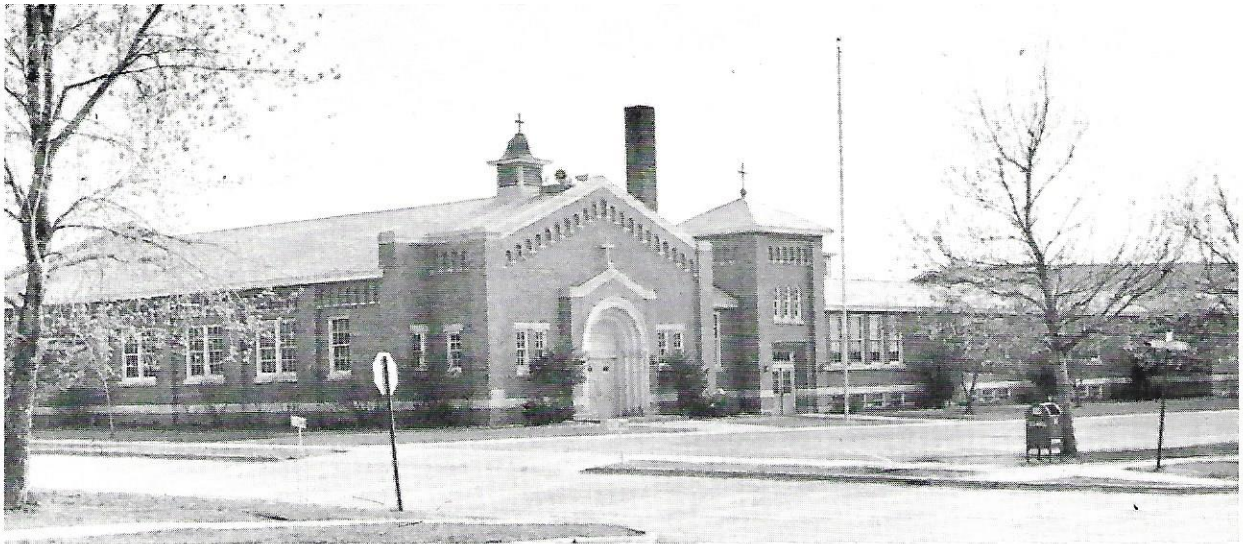
In April, 1946 the Most Reverend Alexander J. McGavick D.D., Bishop of the Diocese of LaCrosse, purchased, for \$10,000.00, twenty acres of land from Mr. John Schmidt to be used for the erection of a new parish. One year later, on April 17, 1947, the Reverend Walter J. Dillenburg was appointed the first Pastor of "Our Lady of Peace" Parish and the formal decree of erection of the new church building and the formal appointment of its Pastor was issued on June 21, 1947.

This marked the beginning of a period of progress for Marshfield's newest Parish which has continued uninterrupted toward its final fulfillment: This Church built through our combined efforts and raised to the Honor and Glory of God, which we dedicate here today.

The first Parish meeting, with about 125 members attending, was held on the evening of July 2, 1947 and the first slate of officers chosen for the new Parish were:

Most Rev. John P. Treacy D.D., Bishop of La Crosse Diocese — President
Rt. Rev. Msgr. C. W. Gille — Vicar General
Rev. Walter J. Dillenburg — Vice President and Pastor
Fred A Rhyner — Secretary
Elmer J. Martin — Treasurer

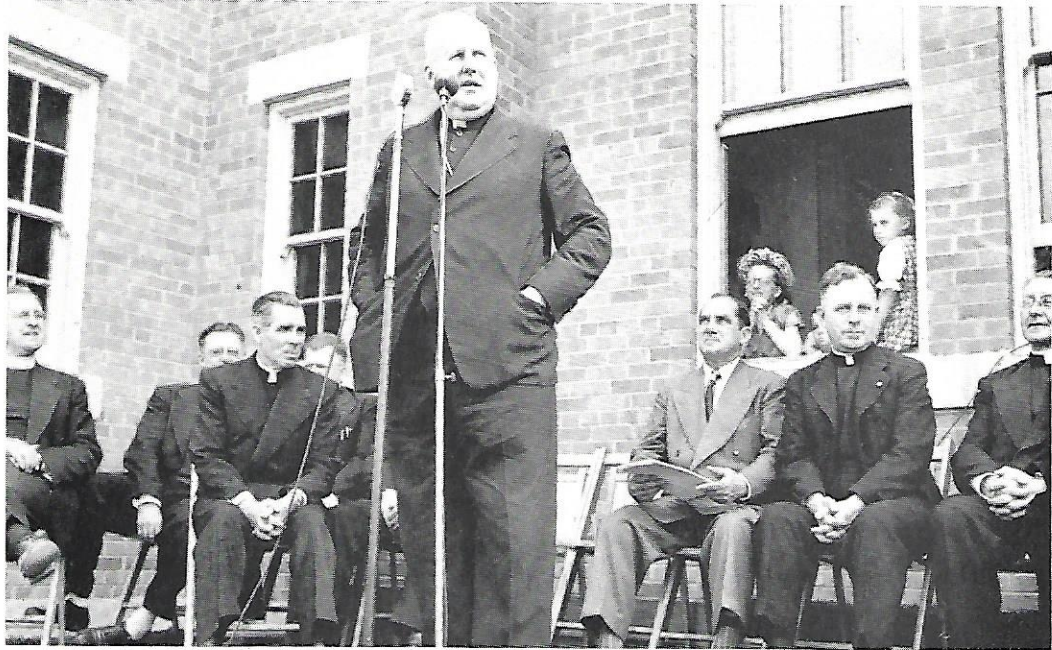
It is interesting to note that the office of Secretary was held continuously by Fred Rhyner until his death in 1963 and that Elmer Martin has been the only Treasurer in the Parish's 19 year history.



At the second annual parish meeting held on May 3, 1948 it was unanimously approved that "Our Lady of Peace" proceed with building plans and there was much joy on May 18th of that year when our Pastor Blessed the ground and turned the first shovelful of earth.

Construction of the new temporary church and school progressed rapidly and the cornerstone was laid on August 1, 1948.

The first ceremony performed in the new church was the Nuptial Mass of Carol Wiltgen and Robert Beck on Saturday morning, February 19, 1949. The first Sunday Mass was celebrated the following day and this climaxed the growing pains of the new parish. Never again were its members to climb the creaky stairs to sit on benches in the cold of winter and heat of summer in the old Knights of Columbus Hall to participate in Sunday Mass and other services.



On June 12, 1949, just eight years after his ordination to the priesthood, Father Dillenburg and his parishioners had their new Church Blessed and Dedicated by the Most Reverend J.P. Treacy D.D., Bishop of the diocese of LaCrosse. An unexpected feature of the Dedication was the presence of Bishop Fulton J. Sheen, whose address was interspersed with his usual keen wit and spiritual depth.

Growth of that original 1946 \$10,000.00 investment was not destined to stop once the new temporary church was completed. On Sunday afternoon, April 22, 1951 our Pastor turned the first spadeful of earth which marked the beginning of the construction of the new Parish rectory. On this same afternoon Father Hugh J. Deeny turned the first shovelfull of earth in the ground breaking ceremonies for Columbus High School.

Columbus High School was built at an approximate cost of \$1,070,000.00 and is the only Catholic High School in the area. After so many years of being crowded at St. John's the High



School students were finally to have the advantages of eighteen large, light, airy well planned class rooms; a spacious library; a sound proof suite for music courses; a large splendidly equipped gymnasium; their own Chapel and Cafeteria; complete science laboratories and home-making department. This new High School greatly increased the efficiency and broadened the scope of the city's entire Catholic school program.



The rectory was completed in December of 1951 and on January 6, 1952 open house was held for the public. On January 7th Father Dillenburg moved into his first real home since arriving in Marshfield. Since September of 1949 he had been living in the school building, and before that he had resided in the home of Mrs. Emil Umhoefer.

Our Pastor now had a home, but the next project to face not only Our Lady of Peace but the other Parishes in the city as well, was a new Convent. The Columbus High School Sisters had been residing at the St. John Convent and the Our Lady of Peace Sisters were living in the school building. Our Parish provided one-third of the \$186,000.00 cost of this structure in addition to joining with the two other city Parishes to finance the remaining amount. A community campaign was launched to raise funds for a joint Convent for the two groups of nuns and to reduce the Columbus High School debt. The ground breaking ceremony for the Sisters' Convent was held on April 23, 1954 and the building was completed in time for the Sisters to celebrate Christmas in their new home.

For the present all construction was completed and the Parish enjoyed the opportunity to rest and pursue the fruits of its labors. In January of 1959 the parishioners showed their "appreciation and affection to a wonderful Pastor for his untiring efforts and hard work" by presenting Father Dillenburg with the keys to a new Ford Galaxie.

Less than one year later, on January 5, 1960 "Our Lady of Peace" Church was badly burned. This was the result of a fire accidentally started in the Christmas Creche and which spread through the sanctuary and nave section of the church. The interior of the church was extensively damaged and many of the pews charred by tile and insulation falling from the ceiling. Smoke and water damage was considerable and many windows broken by the intense heat. There was a bright side to the disaster, however, in that the Blessed Sacrament was removed from the

Tabernacle, there was no loss of human life and the damage, estimated at \$36,000.00 was fully covered by insurance.

It was impossible to use the church, and while it was being restored Sunday Mass was held at Columbus High School auditorium. The restoration work progressed rapidly and on February 28, 1960 mass was again held at the completely redecorated Our Lady of Peace Church.

1963 is a year to remember in the annals of our Parish. This year saw the final payment on the debt of our temporary Church as well as the final Parish share of the Columbus High School debt.

At the Parish meeting on January 26, 1964 the mortgage was formally burned. The history of progress in this Parish is such that on the momentous day of the burning of the mortgage a vote was taken on building a new church and was passed by an overwhelming majority.



The ground breaking ceremony for this, our new church, was held on May 2, 1965 with our Pastor once again lifting the first shovelful of earth and members of the Parish as well as local priests in attendance.

Throughout the fall and winter of 1965-1966 most of us watched in amazement at the remarkable progress of God's edifice. When spring arrived, bringing with it the installation of the altar, the lights, the carpeting, the bells, the windows, the Baptismal font and the pews we were encompassed by a great impatience to worship in our new Church.

It was fitting that on Mother's Day, May 8, 1966, Father Dillenburg laid the corner stone of the church of our Heavenly Mother – Our Lady of Peace – and the three pastors: Father Dillenburg, Monsignor Schuh and Father Timmerman in turn Blessed their respective bell, all three of which will ring in unison from our bell tower.

Our Lady of Peace Parish of Marshfield, Wisconsin has much to be proud of in their new church. It is the fulfillment of two decades of sacrifice and cooperation for Father Dillenburg and his parishioners but more important, the final realization of their dedicated spiritual dreams.

The Design and Structure of Our Lady of Peace Church



The cross has always been a symbol of Christianity, because on the cross Christ died. He atoned and satisfied for sins and made it possible for us to enter heaven. In planning Our Lady of Peace Church, it was deemed important that this central idea be carried out to its fullest. Hence, you will note that the church is built in the form of a cross with the altar of sacrifice standing where the cross intersects.

This concept also has many practical advantages. With a seating capacity of 850 people and in view of the new liturgy with its participation, it is necessary to have the people gathered around and near the altar of sacrifice. There is a seating capacity of 450 in the main nave of the church and 200 in each of the transepts. We have accomplished this to the extent that most of the people in the Church are not more than fifty feet from the altar. All can easily see and hear the priest and the priest can very easily see all his congregation.

In the new liturgy of the church the problem of the tabernacle and the chair of Moses (the "presiding chair") has raised many problems and questions in the Church today. Our Lady of Peace Church was no exception. We feel that much has been accomplished here. You will note that there really is no sanctuary as we understood it in the past. By raising the altar of repose and chair of Moses on a platform two steps up from the altar of sacrifice, we have given the Eucharist (tabernacle) and the chair of Moses and Pulpit (Word of God) equal and prominent importance. Again the cross of Christ gains importance by a large black cross which divides the two. This cross is attached to the reredos which is twenty-six feet wide and thirty-two feet high. A skylight, eighteen feet in diameter, serves to illuminate and accentuate the focal point in the Church which is the altar of sacrifice. It also serves at the same time, as a canopy for the altar.

The light fixtures were specially designed for this church. A special feature here is that each light fixture has an eight inch speaker built into it that will provide a low sound speaking system covering the whole church.

Behind the reredos are the mothers room, work room, boys sacristy, and priest sacristy. Directly

above these rooms is a large store room which also houses the organ pipes. The console of the organ being in the right transept near the altar.

The church is built on grade level with no steps to climb while entering the church. There are five entrances — the main one to the North with a canopy which permits vehicles to drive under it. The remaining four entrances are at the corners of each transept. These also have canopies over them to protect you from the weather. A special feature in the main (north) narthex is that provision has been made for a processional sacristy on one side and on the opposite side a bride's room.

The main nave of the church is narrower at the entrance (thirty-four feet) and wider near the altar (sixty feet). The entire church is carpeted with acrolan carpet — hence reducing maintenance 53%, increasing acoustical value 30% and warmth 20%. The wooden arches are free standing and raise to the height of 35 feet at the entrance and to 42 feet above the altar. Hence the roof of the church rises gradually from north to south.

The church has a full basement which contains a large dining room enough to seat 700 people, a large kitchen 50x50', and a club room 50x50', plus the boiler room and other facilities.

Every Church has its strong features and no doubt some weak features. We like to believe that Our Lady of Peace Church has met the challenge of the time. It has devotional appeal, very sound construction and great functional versatility. It is a product of our own times and for this reason we are unable to put an architectural nomenclatur on it. Is it Romanesque, Gothic or Contemporary? Perhaps future generations will be able to call it by its correct architectural style. For us in this generation it is a cruciform church resembling somewhat the form of an anchor which is a symbol of hope. It is hope and trust in God and faith in Christ and His Cross that has brought this building into reality. May it always serve as a beacon for us and future generations.

The Bells are Blessed and Cornerstone is Laid

Approximately 300 parishioners and others witnessed the laying of the cornerstone and the blessing of the bells of the new Our Lady of Peace Catholic Church here at 3:30 p.m. Sunday, May 8, 1966. Because of a cold, raw wind, the ceremony began indoors, in the new edifice.

After the singing of a hymn, "Praise to the Lord," the pastor, the Very Rev. Walter J. Dillenburg, told of the historical significance of cornerstone laying, recalling that in earlier times the cornerstone supported the entire building and was therefore considered the most important part of the structure.

When the building was a church, a cross was placed in the cornerstone to indicate the place of the altar. In the new church here, this cross hangs behind the main altar, and the blessing of the cross was part of Sunday's ceremony.

Because of the historical significance of the cornerstone, it contains such items as a copy of the Marshfield News-Herald from the previous week, the latest copy of the Times Review, a picture of Pope Paul VI, three annual reports of the parish, four parish bulletins, a copy of the Milwaukee Journal, two Columbus Year Books, a dedication book of the convent, coins in 50, 25, 10, 5 and one-cent denominations, pictures of Sunday's ceremony, and photographs of Father Dillenburg and Father William J. Matzek, assistant pastor.

Father Dillenburg then explained the ceremony of the blessing of the bells and described the three bells, which were cast by the Eijsbouts Bell Foundry of Asten, Holland; saying that "The electric mechanism, clock, and installation were purchased from Schulmerich Carillons, Inc.

Unlike modern bells in which only the hammer moves, these bells will swing. The largest, weighing 1,870 pounds, is dedicated to Our Lady of Peace parish. It is 44 inches in diameter and will have an F-sharp tone.



The second bell, dedicated to St. John's parish, weighs 880 pounds, is 35 inches in diameter, and has an A-sharp tone. The third weighs 530 pounds, is 29 inches in diameter with a C-sharp tone, and is dedicated to Sacred Heart parish. Each bell is inscribed with the name of the parish to which it is dedicated.

The bells hang in a 12-foot cage erected on the tower of the church and are visible as they summon the parishioners to worship. A 14-foot cross surmounts the bell tower.

The congregation moved outside in a semi-procession for the actual ceremony, and as Father Dillenburg blessed the largest bell, the Rt. Rev. Msgr. A. N. Schuh, pastor of St. John's blessed the second bell, and the Very Rev. L. H. Timmerman, pastor of Sacred Heart, blessed the third, the congregation joined in the responsaries and the hymns.

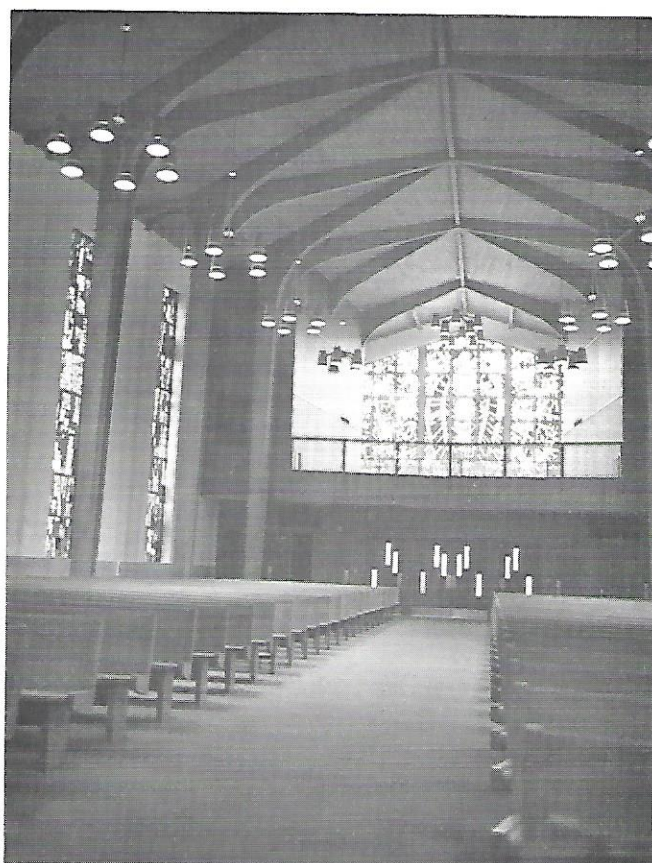
Other priests participating in the ceremonies were the Rev. John Agnew, Rev. William Matzek, and Rev. T. J. Etten.

THEME OF THE WINDOWS

Because this is Our Lady of Peace Church, it is to her that the facade window is dedicated.

The central figure is a quiet and benign Mary. The Dove of Peace with olive branch in his beak nestles in her protective hands . . . signifying Mary Our Protectress of Peace. Surrounding her are uplifted wing forms interspersed with olive branches. These remind us that wherever she is, her world is a peaceful one and that it is our prayerful hope for our two worlds to mingle.

In color the window is a joyous blend of whites, lemons, golds, olives, and clear aquas.



The Nave Windows

Because our concern for Peace is a timely one, it seemed pertinent to continue this theme in the nave windows. Therefore, each of the nave windows is devoted to particular kind of peace.

As one faces the sanctuary, the window on the right nearest the narthex contains the Resurrection Phoenix, the legendary bird which rose again from the flames. This symbolizes Peace that comes with Eternity.

Moving along toward the sanctuary one see roses in the next window. The rose is a symbol of love and is used here to signify the Peace that exists in true friendship.

The next window incorporates fish — some swimming and some floundering — and the fact

that some fish swim against the current and others are carried along by it denotes the Peace of mind that develops with self-discipline.

In the following window, we see crossed keys, one symbolizing absolution and the other ex-communication. These are the symbol of the confessional and represent Peace through Confession.

The sunflowers in the next window remind us that a sunflower always turns its face to the sun and this in turn symbolizes Peace through submission to God's will.

Moving into the transept additional significance is devoted to these windows because they are nearest the altar; and thus, a Eucharist theme is a further emphasis. Here we find on both sides of the transept, symbolism in the grapes and wheat which represent the Peace that comes through receiving the Blessed Sacrament.

Moving away from the altar, the first window in the nave nearest the altar contains symbolism signifying Peace of the soul — a soul resigned to the will of God — and is represented by the compass whose needle always points to the North.

In the next window, we see doves signifying Peace that is given us by Divine Grace.

In the following window, Peace through wisdom is represented by lighted candles, symbols of enlightenment.

Peace between nations is signified in the next window by the familiar dove with olive branch.

The last window in the series is devoted to the Peace of Christmas and indicates this by the six-pointed Creator's Star, a symbol of the Nativity — for it was then that the attending angels sang, "Peace on earth, good will to men."

All the windows were designed by the Conrad Schmitt Art Studios of Milwaukee, Wis.

Pipe Organ

For generations the Pipe Organ has been the accepted musical instrument for the house of worship. No other instrument satisfactorily meets the needs of the liturgical service. The Pipe Organ in our new church is beautifully located to give the most effective sound projection. It is custom-built by the M. P. Moller Co. of Hagerstown, Maryland, and is the design of Henry Beard, area representative.

The console is detached and movable, with all-electric operation. The action is electro-pneumatic. For those who understand the technical side of the organ, the pipe analysis is listed.

<u>Unenclosed</u>			<u>Enclosed</u>		
Bourdon (Rohr)	16'	12 pipes	Gedeckt	8'	73 pipes
Principal	8'	80 pipes	Viola	8'	61 pipes
Rohrfloete	8'	80 pipes	Spitzprinzipal	4'	73 pipes
Mixture	III Ranks	183 pipes	Quint (Viola)	1, 1/3	19 pipes
	(15-19-22)		Trompette	16'	85 pipes

There is a total of 666 pipes. They are used in many ways as indicated on the stop tablets. There are many fine solo voices, and many excellent combinations. The full organ will produce a fine ensemble for processions and a congregation accompaniment.

The
Advisory
Board
and
Finance
Committee



Edward Dickman



William Draxler



Lawrence Eberhardy



L. Grancorvitz



Jerry Heinzen



Jack Hobelsberger



Al Koenig



Robert Lotzer



Herbert Martin



Douglas O'Donnell



Richard Pfeil



Alfred Regner



Dick Schneider



George Schneider



Edward Sheahan



Frank Wesley



Chas. Worzella

ROSARY SOCIETY

The first organization formed in the new Our Lady of Peace Parish was the ladies' Rosary Society: on August 18, 1947.

The original officers were:

Mrs. Herbert Martin — President
Mrs. Earle Leu — Vice Pres.

Mrs. Richard Koch — Secretary
Mrs. Joseph Radtke — Treasurer

Mrs. Norbert Varsho was appointed historian and still serves in that capacity.

The present officers of the Rosary Society are:



Mrs. Robert Altmann
President



Mrs. James Trudeau
Vice-president



Mrs. Robert Corbin
Secretary



Mrs. Roman Andres
Treasurer

The Rosary Society was founded on the premise that through their combined efforts the ladies of the parish could achieve great success. Their accomplishments have surpassed all expectation. Divided into ten circles, and working as separate units or as a combined group during its first eighteen years the Society members have made \$189,856.50. Let that record speak for itself!

The method used to make money is left to the discretion of each circle. During the early years money was raised by raffles, bake sales, dances, rummage sales, card parties and basket socials. Some of the circles sold vanilla and occasional cards. The first real cooperative affair undertaken by the Rosary Society was the concession stand at the Central Wisconsin Fair in 1947. Each circle member was asked to bake pies and work one shift and every one cooperated to accomplish a big job and make the undertaking a financial success. During the first years only short orders were served but as the Society grew larger and more help was available — including the much needed and greatly appreciated assistance of the men of the Parish — dinners were added to the menu. This yearly project, besides establishing good-fellowship among the parishioners, has continued to be a most successful source of revenue for the society, having netted approximately \$56,000.00 in the past eighteen years.

Another important means of earning money through the years has been the serving of organization, convention and civic dinners by the Rosary Society ladies.

In the beginning, the money raised was used for school desks and school supplies. The kitchen equipment, the furnishings for the Sisters' Convent and the Rectory also came out of this fund. The fuel bill, the blacktopping of the school grounds and many other essential expenses have been paid by the Society.

As the parish has grown, so has the Rosary Society. It is still comprised of ten circles, but now there at least forty ladies in each circle.

HOLY NAME SOCIETY

The Holy Name Society of Our Lady of Peace Church was organized on May 3, 1948 and membership open to all the men of the parish. Its purpose, then as now, was spiritual development with each member enjoined to lead a good Christian life and set an example for all men.

The original officers were:

Earle Leu — President

Joe Stadler — Vice Pres.

Robert Felker — Secretary

Ben Heinzen — Treasurer

The first undertaking of this newly organized group was the "Mothers' Day" breakfast served at the Armory for all the ladies of the parish and attended by about one hundred and eleven mothers. This breakfast has been an annual event since its inception.

The Holy Name Society is the Sponsor of the Cub Scout Pack and Boy Scout Troop and they have helped to purchase needed supplies for these boys. Playground equipment has also been purchased from funds raised by the Holy Name men as well as basketball and football uniforms for our teams.

In 1952 they also purchased a HAMMOND ORGAN for the church and paid for it through various fund-raising projects.

The first VENISON FEED was sponsored by the Holy Name Society in March, 1955. This was a stag party and all members of the organization were urged to sell tickets to their friends. It has remained stag and an annual affair and each year is bigger and better than the preceding year.

Since 1961 the Holy Name men have also had charge of the "LIVE NATIVITY SCENE" on Christmas Eve and Christmas Day.

In September 1962 it was agreed to sponsor two \$50.00 scholarships annually to two eighth graders who would be attending Columbus High School in the fall. This project has been continued yearly since then.

The present officers are:



Douglas O'Donnell
President



Gerald Praschak
Vice-President



Lawrence Eberhardy
Secretary



Lawrence Thill
Treasurer

IMPORTANT DATES IN THE CONSTRUCTION OF THE CHURCH
OUR LADY OF PEACE



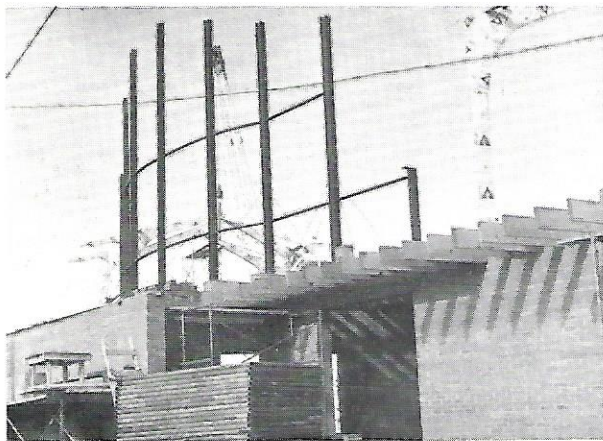
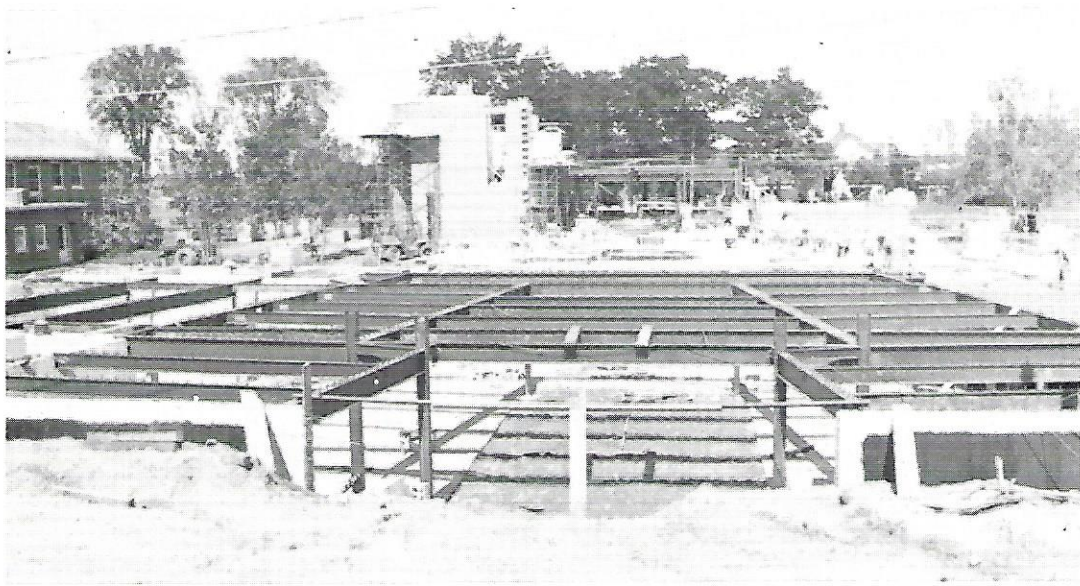
May 2, 1965 (Sunday) Official Breaking of Ground Ceremony at 3:00 p.m.
May 10, 1965 (Monday) Moved trees.
May 10, 1965 (Monday) Began removing the top soil.
May 12, 1965 Began to excavate (2 weeks of rain – hardly any work)



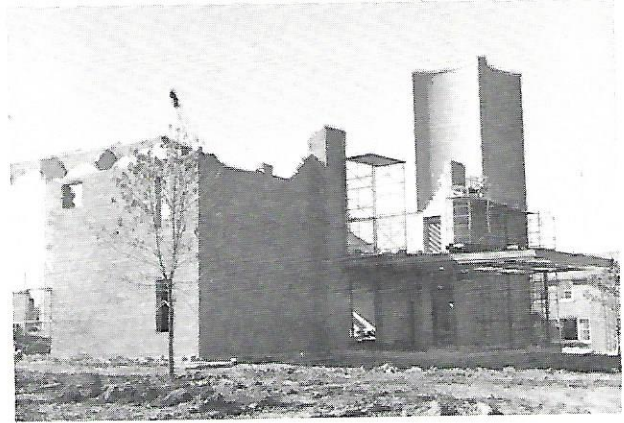
June 9, 1965 (Wednesday) started to pour footings.
June 14, 1965 (Monday) started to pour walls.
July 29, 1965 Laid first block in basement entrance –
brick layers.
July 30, 1965 Finished pouring walls of basement.
August 3, 1965 Started pouring basement floor.



August 9, 1965 Started setting steel I beams.
August 17, 1965 Started laying bricks.



October 11, 1965 Laminated Arches arrived.
October 13, 1965 Started setting up laminated arches.
(worked 1½ weeks and had to wait 2 weeks for second shipment)
December 6, 1965 Bad weather — finished setting beams.



December 7, 1965 Put in roof boards.
 December 20, 1965 Finished laying brick.
 (It took us 4 months but we lost 3 weeks— 18 days
 because of bad rainy weather.)

December 29, 1965 Finished putting on roof boards and roofing paper.

N.B. Frank Adler laid the 1st and last brick.

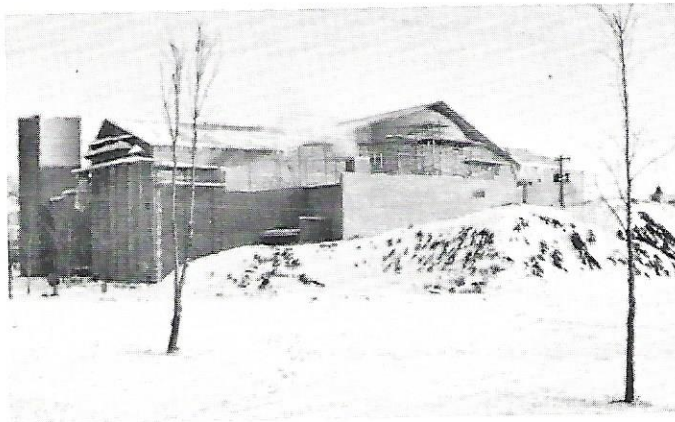
January 24, 1966 Started Plastering.

April 2, 1966 Finished Plastering — laid off two weeks and most of the time 2 men.

March 30, 1966 Started staining deck and beams.

April 13, 1966 Finished putting insulation and shingles on roof.

April 29, 1966 Finished staining beams.



May 2 - May 21 Installed carpeting.

May 6, 1966 Finished putting in marble and installed altars.

May 6, 1966 Organ came.

May 8, 1966 Laying of corner stone and blessing of bells.

May 9 Started installing windows — finished May 27th.

May 9 Started Organ — finished May 14th.

May 16 Pews installed.

May 16 Bells erected.

June 12, 1966 Day of Dedication of Our New Church.

Note: Our Lady of Peace School was dedicated June 12, 1949.

Father Walter J. Dillenburg, Pastor of Our Lady of Peace Parish, Marshfield, Wisconsin, celebrating his silver anniversary to the priesthood. He was ordained June 7, 1941 and said his First Mass on June 15th, 1941.

Parish Members

Adler, Anton
Adler, Donald L.
Adler, Elizabeth
Adler, Frank
Adler, Glenn
Adler, Joseph Jr.
Adler, Mrs. Lena
Adler, Lloyd
Adler, Mary
Adler, Paul
Adler, Mrs. Roman
Adler, Ronald
Adler, Sylvester
Adler, Terrence
Alf, Marshall
Altmann, Robert
Amacher, Lloyd
Ampe, Raymond
Anderson, Robert
Andres, Roman
Andrew, Roy
Badzinski, Louis
Baltus, Vernon
Banks, James C.
Bauer, Albert
Bauman, Allan
Bauman, James
Beining, Clem U.
Bell, Herbert
Bell, Leona
Bell, Mrs. Nicholas
Benish, Mrs. Mary
Berg, Gregory
Berg, Leo
Berg, Mike
Berres, Alvin
Berres, Joseph
Berry, Mrs. Ronald
Beyerl, Dr. Gerald
Biechler, Robert
Biechler, Theodore
Bilek, Mrs. George
Binder, Frank
Binzel, Rudolph
Blackwood, Kenneth
Blaschka, Judy
Blaschka, Rueben
Bloczynski, John
Bloczynski, Lawrence
Bodendorfer, Andrew Jr.
Bodendorfer, Andrew Sr.
Boehm, Conrad
Boigenzahn, Clara M.
Borens, John
Brandsness, Mrs. Eliz.
Brandt, Mrs. August
Brandt, Charles
Brandt, Roman
Bremmer, Louis
Brinkman, Harold
Brost, Leo
Brown, Mrs. Don
Buckman, George
Burns, Dr. John
Bushman, Amber
Bushman, Edward Sr.
Bushman, Mrs. Josephine
Bushman, Robert
Bushman, William
Butler, Mrs. Frank
Canney, Ronald
Capes, Robert
Carey, James
Carlson, Mrs. Del
Carsten, Walter
Christensen, George
Christensen, Peter
Christy, Patrick
Clanton, John
Cliver, Richard
Coleman, James
Connaughty, John
Conner, S. J.
Corbin, Robert
Cournoyer, Allie
Craft, Merle
Cramer, Ray
Dallendorfer, Mrs. N.
Daniel, Eugene
Danner, Reuben
David, Willis
Degnitz, Mrs. Alvin
Degnitz, Sue
Dickman, Edward
Dieringer, Arnold
Dieringer, Carol
Dieringer, Donald
Dieringer, Isadore
Dieringer, John
Dieringer, Norbert
Dieringer, Richard
Dieringer, William
Dietrich, Norman
Dittner, Norbert
Drach, Dr. Irvin
Draxler, William
Dreikosen, Hilarian
Drews, Robert
Drexler, George
Dudley, Ronald Sr.
Dupee, Everett Jr.
Eberhardy, Lawrence
Eckes, Andrew
Eckes, Barbara
Eckes, DuWayne
Eckes, Elmer
Eckes, Herbert
Eckes, James
Eckes, John
Eckes, Nicholas
Eckes, Theodore
Egner, Mrs. Julia
Ellefson, Mrs. Floyd
Eppers, Everett
Erickson, Mrs. Gerald
Esser, Mrs. Ella
Fait, Stanley
Fay, Mrs. George
Fehrenbach, Dr. G. J.
Fehrenbach, John
Fehrenbach, Mrs. Jos.
Fehrenbach, Lucia
Fehrenbach, Victor
Felhofer, Richard
Felker, Andrew
Felker, Mrs. Lloyd L.
Felker, Pat
Felker, Paul
Felker, Ray
Fell, Brenda
Finamore, Joseph
Finucane, Ray
Fleisner, Clem
Fleisner, Kenneth
Fohl, Mrs. Anna
Fohl, Clarence
Fohl, Leander
Forst, Steve
Frankwick, Claude
Frey, Diane
Frey, Donald
Frey, Norbert
Gaier, Frank
Gamble, Gerald
Gamble, William
Gessert, Reuben
Gessert, Lawrence
Gessert, Walter
Gilberts, Odin
Gleisner, Donald
Gleisner, Louis
Goldbach, Paul
Gorman, James
Gosh, LeRoy
Gotz, William
Gouze, Dr. J. F.
Graff, Dianne
Graff, Kermit
Graham, Gene
Grancorvitz, Leonard
Greissinger, Garland
Greissinger, Mrs. Louise
Griesbach, Robert
Grimes, Monica
Gripentrog, Theodore
Gropp, David
Gropp, Roy
Guckenberger, Edwin
Hahn, William
Haight, Dr. Robert
Hakl, Anthony
Hakl, Barbara
Haley, Edward
Hallgren, Kenneth
Hannum, Frances
Hannum, Shirley
Hannum, Mrs. Troy
Hanson, Einor
Hardinger, James
Haralson, Mrs. Donald
Hauke, Walter
Hayden, Thomas
Hayes, Charles
Hebert, Mrs. Ward
Heckel, Alvin

Heckel, Carl
Heckel, Eddie
Heckel, Harry
Heckel, Henry
Heckel, John
Heinzen, Jerry
Heiting, Donald
Heiting, Kenneth
Helbach, Joseph
Helbach, Mary
Helms, Thomas
Henseler, Wallace
Henseler, Anton
Herman, Gerald
Herman, Ray
Hilgart, Fred
Hobelsberger, Jack
Hoefner, Lester
Hoerl, Mrs. Marie
Hoff, Mrs. Otto
Hoffman, Jerome
Hoffman, Robert
Holland, David
Hughes, Billy
Hughes, Charles
Hughes, Daniel
Jacobs, Dr. Martin
Jahnke, William G.
Janssen, Mrs. Wayne
Jirschele, Glenn
Jirschele, Michael
Jirschele, Ray
Johnson, Donald
Johnson, Mrs. Ludwig
Kademan, Mrs. J.
Kaiser, Mrs. Joseph
Kappel, Joseph
Kappel, Loretta
Karau, Reinhold
Kasberger, Lawrence
Kaufman, Mrs. F.
Kaufman, Herman
Kaufman, Mrs. M.
Kautzky, Francis
Keller, August
Kennow, Lucy Ann
Kennow, Wilder
Kenyon, Lloyd
Kiesling, Anton
King, Mrs. Robert
Kirschner, John
Kirschner, Mary
Klement, James
Klismet, E. F.
Klister, Russell
Knaufl, Arnold
Koch, Gertrude
Koch, Jane
Koch, Karl
Koch, Mrs. Richard
Koenig, Al
Koenig, John
Koenig, Prince
Koenig, Robert
Kohl, C. J.

Kohl, Richard
Kohlbeck, Walter
Koller, Edward
Koller, Gordon
Koller, Dr. Robert J.
Kopf, Dale
Kopf, Justin
Kraemer, Anton J.
Kraemer, Richard
Kraus, Catherine
Kraus, Corrine
Kraus, Mrs. Glenn
Krause, Mrs. E.
Krohn, Alexander
Kult, Ervin
Kunesh, Mrs. Anna
Laessig, Mrs. H. L.
LaMere, LaVern
Langreck, Bernard
LaSee, Norbert
Lauby, Leander
Lauby, Leonard
Lee, Lawrence
Leinwander, John B.
Leinwander, John Jr.
Leinwander, Norbert
Leinwander, Robert
Leu, Mrs. Earle L.
Lewerenz, Rhinehart
Lewinski, James
Lewis, Daniel
Ley, Charles
Ley, Raymond
Lotzer, Robert
Loveland, Dr. H. C.
Loveland, John Jr.
Luder, Carl
Luder, Mrs. Otto
Machtan, Mrs. Ronald
Malsin, Mrs. Milton
Markworth, Mrs. Robert
Marshall, Thomas
Martin, Elmer
Martin, Harold
Martin, Herbert
Martin, William
Mattison, Edward
Mau, Mrs. James
Maurer, Al
Maurer, Karen
Maurer, Mrs. John
Maurer, Wilfred
Mayer, Mrs. Siegel
McDonald, Lawrence W.
McGivern, Frank
McGivern, Roseanne
McGivern, Terrence
McNamara, John
Mech, Emil
Mechler, William J.
Meress, E. L.
Merkel, Eugene
Merkel, Karl W.
Merkel, William
Mettelka, E. J.

Meyer, Mrs. Bernard
Meyer, Freda
Meyer, Gerald
Meyer, Herman A.
Meyer, James
Meyer, Othmar
Meyer, Victor
Michels, Norbert
Miller, James C.
Miller, Paul
Millich, Mrs. Michael
Mittelstaedt, Lucine
Moen, Allen
Morrison, Veryl
Mullin, Dan
Mundt, Fred
Murphy, Jack
Murphy, Joseph
Murphy, Wm. J.
Naset, Walmar
Nehring, Mrs. Verna
Neis, Francis J.
Nelson, Mrs. George
Nelson, Mrs. I.
Nelson, Norman
Nest, Mrs. William
Neukirchen, John
Neuman, Norbert
Niehaus, Willard
Norfleet, Mrs. Robert J.
O'Donnell, Douglas
Ohlsen, Raymond L.
Olson, Gerald
Pankratz, Lawrence
Pankratz, Ray
Patt, Mrs. W. A.
Paulin, Clarence
Paulin, Mrs. Wilmer
Pecher, Bonnie
Pecher, Gerald
Pecher, Lenore
Pecher, William
Pelanek, Floyd
Peterson, Floyd
Peterson, Del
Pfeil, Richard
Pilsner, Marvin
Pilaner, Linda
Phillippi, Mrs. Bess
Platteter, R. L.
Polster, Harvey
Poppy, DuWayne
Pötz, Walter
Praschak, Duane
Praschak, Gerald
Praschak, Mrs. Henry
Ptacek, Dr. Louis
Putnam, Donald
Pyka, Dr. Rudolph
Rabe, Charles
Radlinger, Charles
Radlinger, Robert
Radtke, James
Radtke, Joseph
Rasmussen, Gordon

Rau, Clemence
Rau, Douglas
Rau, Eugene
Reckner, Mrs. Robert
Regele, Andrew
Regele, Charles
Regele, Emery
Regner, Alfred
Regner, Mildred
Reif, Marlyn
Reigel, Clifford
Reigel, Edward
Reigel, Harold
Reigel, Mrs. Martha
Retterath, James
Reuter, Lawrence
Reynolds, Aloysius
Rhyner, Mrs. Fred A.
Rice, Dr. Thomas J.
Roecklein, Robert
Roecklein, William
Roherty, John
Roider, Urban
Rottscheit, Robert
Rupel, Dr. John W.
Sacho, Frank
Salisbury, James
Salwach, Theodore
Sanders, Myron
Sautner, Harold N.
Saverda, Irwin
Scheibe, John
Schiferl, Mrs. Michael
Schlagenhaft, Mrs. Dorothy
Schlagenhaft, George
Schlagenhaft, Richard
Schlecht, Mike
Schmidt, Mrs. Henry J.
Schmidt, Mrs. Viola
Schmitt, Anton
Schmitt, Arthur
Schmitt, Carl Jr.
Schmitt, David
Schmitt, Donald
Schmitt, James
Schmitt, Neil
Schmitz, Mrs. Ella
Schneider, George
Schneider, Iona
Schneider, Richard
Schommer, Lambert
Schonhardt, Joseph
Schreiber, Elmer
Schreiner, Elmer Jr.
Schroepfer, Ray
Schueller, DuWayne
Schueller, Joseph
Schuld, Eugene
Schulte, Dr. Alex
Schweikl, Joseph
Secard, Warren J.
See, Barbara
See, Michael
See, Philip
Seehafer, Armin

Seidl, Arnold
Seidl, David
Selberg, Julie
Selberg, Mrs. Jarvis
Selner, Joseph
Senn, Joseph
Severt, Mrs. H.
Seymour, Henry
Sheahen, Edward
Silvis, Dr. Stephen
Smith, Edmond
Smith, Richard
Sommers, Stanley
Specht, Harold
Specht, Kenneth
Stadler, Mrs. Joseph
Stahnke, Reinhold
Stangl, Eugene
Stauber, John H.
Stauber, John L.
Steckel, Frank
Steinwagner, James
Steinwagner, Joseph
Sternweis, Al
Sternweis, Donald
Sternweis, George T. Jr.
Sternweis, Joseph
Sternweis, Leo
Sternweis, Mrs. M.
Sternweis, Richard
Stertz, LeRoy
Stoflet, Donald
Stoflet, Terry
Stoiber, Louis
Strack, Mrs. Joel
Strebe, Clyde
Strebe, DuWayne
Strebe, Ronald
Swedberg, Mrs. Carl
Switlick, Vincent
Tasse, Gregory
Tepp, George
Thill, Lawrence
Thomas, George
Thomer, Tony
Thomer, William
Thor, Evelyn L.
Tiffany, Mrs. Lester
Tlachac, Robert
Tracy, Richard
Tremelling, Donald
Tremmel, Albert
Tremmel, Ralph
Treutel, Andrew
Treutel, Mrs. Wm. E.
Trierweiler, Mrs. E.
Trudeau, George Sr.
Trudeau, James
Tuchscher, Mrs. G.
Umhoefer, Ivo
Uthmeier, Mrs. Wm. A.
Uthmeier, William Jr.
Van de Loo, Vincent
Varney, Emery

Varney, Myron
Varsho, Norbert
Von Holzen, Casper
Weber, Arnold
Weber, Charles
Weber, Herbert Jr.
Weber, Herbert Sr.
Weber, Hubert J.
Weber, John P.
Weber, Joseph
Webster, Mrs. Ralph
Wechorek, Harold
Weibel, William B.
Weigel, Anton
Weinfurter, Frank
Weix, Paul
Welch, DuWayne
Welch, William
Wenzel, Frederick
Wenzel, James
Wesley, Frank
Werner, Robert
Widmann, Kathleen
Widmann, Mrs. Melvin
Widman, Mrs. Nora
Wierzenski, John
Wilcott, James Sr.
Wilhelm, Francis
Wilke, Melvin
Wilkens, Harold
Wilson, Richard
Wiltgen, John
Wiltgen, Dennis
Wingert, Conrad (Mike)
Wipfli, Herbert
Wittman, Lawrence
Wohlfahrt, William
Worzella, Charles
Wright, Kristine
Writz, Daniel
Wolf, Dennis
Woodkey, Richard
Zillmer, George
Zorman, Mrs. Rudy
Zahn, Joseph
Zimmerman, Bernard
Zuber, Walter
Zweck, Frank

ACKNOWLEDGEMENTS

CONTRACTORS AND MATERIALS

Donn Hougen	Architect
Douglas O'Donnell	Assistant Architect
Conrad Schmitt Art Studios	Windows and Decorating
Alfred Regner Construction Co.	General Contractor
Weyerhaeuser Co. (Relco Div.)	Arches and Decking
Felker Bros. Mfg. Co.	Steel
Adlers, Inc.	Bricklayers
Merkel Electric Inc.	Electrical
Central Burner & Equipment	Heating
Maurer Supply Corp.	Ventilating and Heating
Justin Kopf	Plastering
Schreiners Inc.	Plumbing
Marshfield Lumber & Supply	Supplies
Pritzl Hardware	Supplies
Luder's Lumber Co.	Lumber
LaMere Photographers	Pictures
Owen Block & Supply Co.	Cement Blocks
Shapiro & Sons	Steel
Streator Brick Co.	Bricks
I. Brandl	} Excavation and Crane Service Welding Carpeting Cement Marble and Altar Doors Pews Church Furnishings
Peterson Bros.	
Roecklein Construction Co.	
Marshfield Radiator Service	
D & R Furniture Mart	
F. F. Mengel Co.	
Milwaukee Marble Co.	
Hoffer Glass Co.	
Ossit Church Furniture	
Carl B. Noelke	
M. P. Moller Inc.	} Organ Tile Bells Loans Loans Sand and Gravel Ceiling Tile Heating Controls Excavating Supplies Crane Service Printing - Dedication Book Editor - Dedication Book
Father John B. Pinion	
Cliff Reigel	
Schulmerick Inc.	
Central State Bank	
Citizens National Bank	
Rueben Wagner	
Marshfield Milling Co.	
Johnson Controls	
Moen Construction Co.	
Ace Hardware Co.	
Kolstad Construction Co.	
Heinzen Printing Inc.	
Mrs. Milton Malsin	