

Thimbleberry Books

Thimbleberry Books began in 1994 with Holly Puett as the owner and originator. Initially located on Second Street west of the alley way, the shop remained there until 1996 when she moved to larger quarters at 132 South Central. Holly sold the business to Kim E. Hartley and Kim Mathias of Marshfield who expanded the retail space from the first half of the shop all the way to the end of the building.

In a story found on one of the Marshfield History Project books, the bookstore was described as: "People traveling along State Route 13 (Central Avenue) take note of the unique front door, which Kim Hartley painted to look like book-filled shelves complimented with a sleepy orange tom cat (Max, by name) curled at the bottom. Given the fact that it had become a challenge for some visitors to find the doorknob among the various books depicted, Kim painted a special doorknob plate. It seems to help most of the time. Inside, the shop has a nice Northwood's feel to it due to the extensive use of split logs along the built-in bookcases in the front half of the store and the stained pine slats in the middle portion of the shop that house the classics and children's



The infamous front door at the 132 South Central Avenue, Marshfield, "which Kim painted to look like book-filled shelves complimented with a sleepy orange tom cat (Max, by name) curled at the bottom."

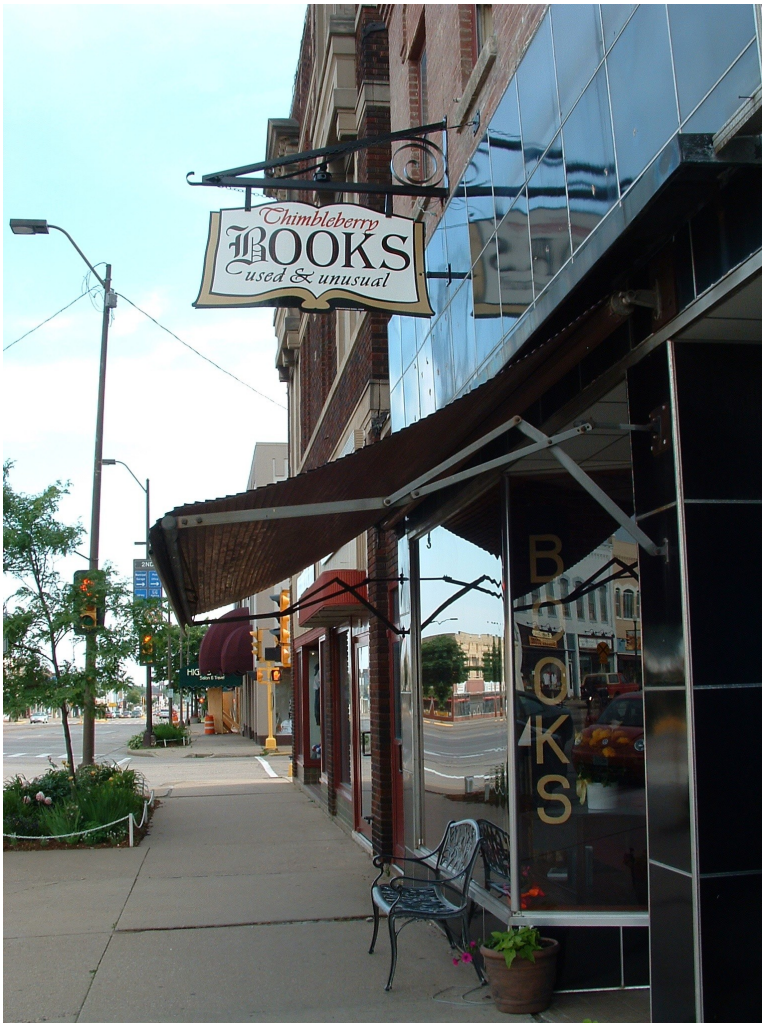


Previously Jerold's Clothing, 166 South Central Avenue, is the current home of Thimbleberry Books.

section. These are the original timbers that Hastings Sport Shop put up around World War II. The Hastings occupied this location until the mid-1980s."

By 1998, Kim Hartley moved some of the business online, where it can be seen today. For the next seven years, Thimbleberry Books remained in that location, sought out for the front door painted as a bookshelf (with an orange tom cat sleeping at the bottom). The shop also retained much of the north woods log cabin and split-wood furnishings when it had been sports shop in the 1940s.

In 2004, Jerold's Clothing owner Jerry Morzinski, decided to close the business and sell the building



Thimbleberry Books at its current location at 166 S. Central Avenue.

that had been in the family since 1970. Kim Hartley and husband, Jeff Kleiman, purchased the building at 166 South Central Avenue that summer and by January 2005 began an extensive restoration that uncovered numerous windows along with the original tin ceiling from the turn of the last century.

After doing some research, Kim and Jeff learned that the oldest part of the building had been constructed around 1887 doing service as various retail shops, from shoe shop to pool hall. There was a significant addition to the building, undertaken by the Adler family in the 1930s to accommodate a bakery, expanding it so that it stretched to the alleyway adjacent to the Charles Hotel. The locale remained home to the Adler Baking Company until the advent of Jerrold's clothing.

Today, the store comprises about 3400 square feet of space with more than 30,000 individual titles. Thimbleberry Books is the largest used bookstore in the region, drawing in folks from around the United States along with the occasional stray visitors from Europe and Asia. The two shop cats, Tigger and Snuggles, have replaced the painted door as the notable attraction for both the shop's regulars and newcomers.

These stories will be coming soon:

Also see Adler Bakery Story.

Also see Jerrold's Clothing Story.

Also see Vienna Bakery Story.

Also see Bartmann Shoe Store

Also see B. W. Fitzgerald Tailoring & Drycleaning

Also see Kohl's Marshfield Bakery

Also see H. B Parker Shoe Store

Also see William H. Voss Shoe Store



Tigger and Snuggles, at home at Thimbleberry Books.

If you have any additional information (including pictures) regarding this business or location, we would really appreciate you contacting us and sharing. We will add information whenever possible.

For questions, or for sharing additional information, please contact us at schnitzl@charter.net. Please include what story the information relates to. Attach your text information in the form of a word document, please no PDF's. Photos should preferably be in jpeg format.

For additional stories on the historical sights and businesses of Marshfield, visit our website at: <http://www.marshfieldgenealogy.com/QR-Codes-of-Historical-Marshfield.html>.